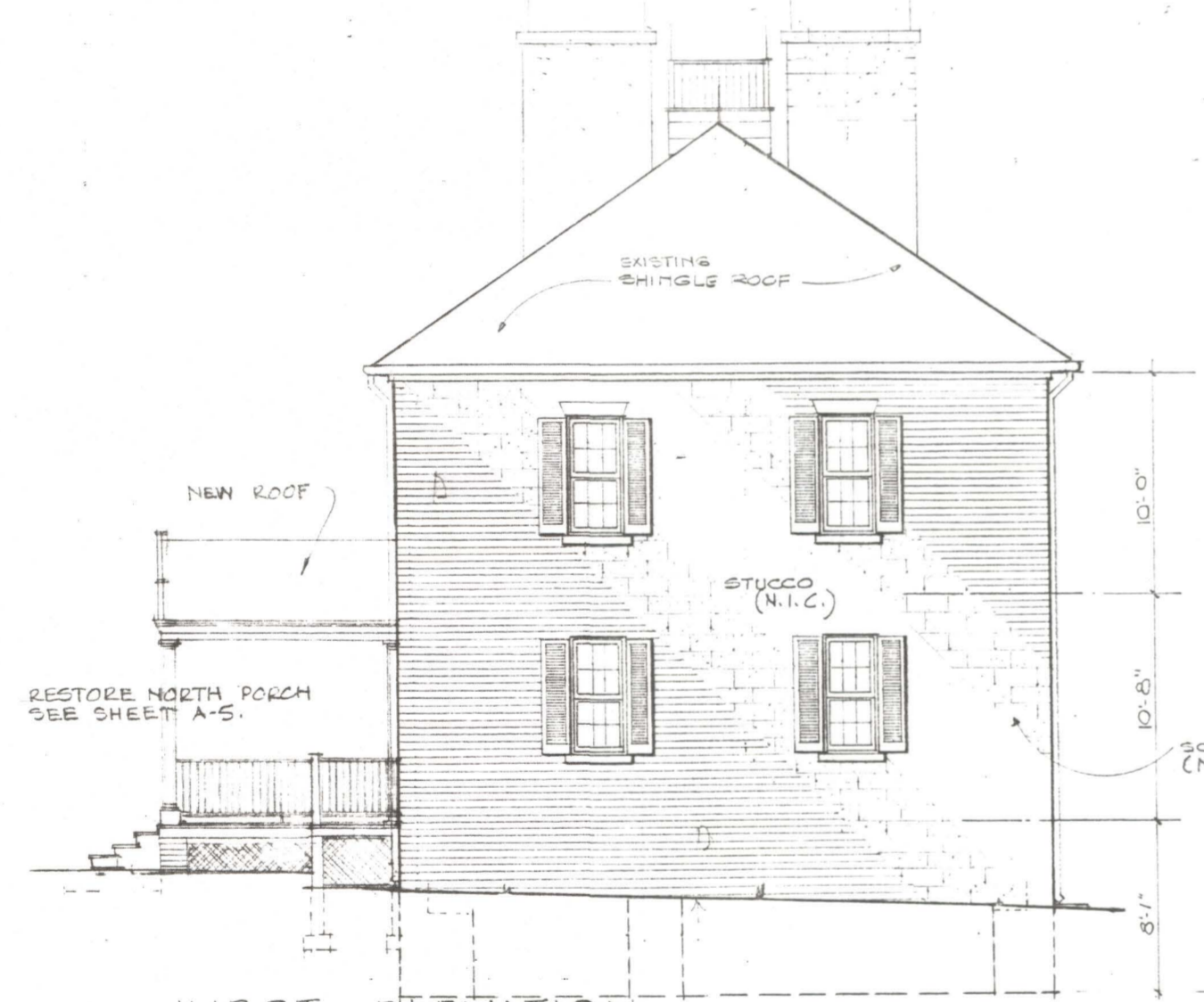




EAST ELEVATION

NORTH ELEVATION SCALE 1/8" = 1'-0"



WEST ELEVATION SCALE 1/8" = 1'-0"



SOUTH ELEVATION SCALE 1/8" = 1'-0"

- NOTE:**
1. ALL EXTERIOR LOUVERED WINDOW BLINDS SHALL BE REPAIRED AS NECESSARY AND STRENGTHENED AT ALL JOINTS OF STILES AND RAILS WITH STANLEY #000-4 FLAT CORNER IRONS SET ON BACKS OF EACH BLIND. ALL HINGES SHALL BE INSPECTED AND LOOSE HINGES RESET PRIOR TO REHANGING BLINDS.
 2. ALL WINDOWS SHALL HAVE NEW SASH CHAINS.
 3. ALL EXTERIOR DOORS SHALL BE WEATHER-STRIPPED.
 4. WOOD GRILLES SHALL BE INSTALLED IN ALL BASEMENT WINDOWS. SEE SHEET A-7 FOR DETAILS.

REVISIONS

APPROVED SIGNED	DATE
FOR THE BOARD OF LIBRARY TRUSTEES	
APPROVED SIGNED	DATE
FOR THE BOARD OF COUNTY COMMISSIONERS	
APPROVED SIGNED	DATE
FOR THE DEPT. OF HOUSING & URBAN DEVELOP.	

A HISTORIC PRESERVATION PROJECT
 BY THE
 BOARD OF COUNTY COMMISSIONERS
 OF ST. MARY'S COUNTY, MD.
 ASSISTED BY A GRANT FROM
 THE U.S. DEPARTMENT OF
 HOUSING & URBAN DEVELOPMENT



THE RESTORATION OF TOPOR HALL
 PHASE NO. 2
 LEONARDTOWN, MARYLAND
 FOR THE
 BOARD OF LIBRARY TRUSTEES
 OF ST. MARY'S COUNTY, MARYLAND
 ARCHITECT
 ORIN M. BULLOCK, JR., F.A.I.A.
 1432 JOHN STREET
 BALTIMORE, MARYLAND 21217
 PHONE: 523-7822

H.S.P. PROJECT NO. HPR-3
 DATE: AUG. 1, 1971
 BY: W.D.G.
 DRAWING: A-4 OF 19