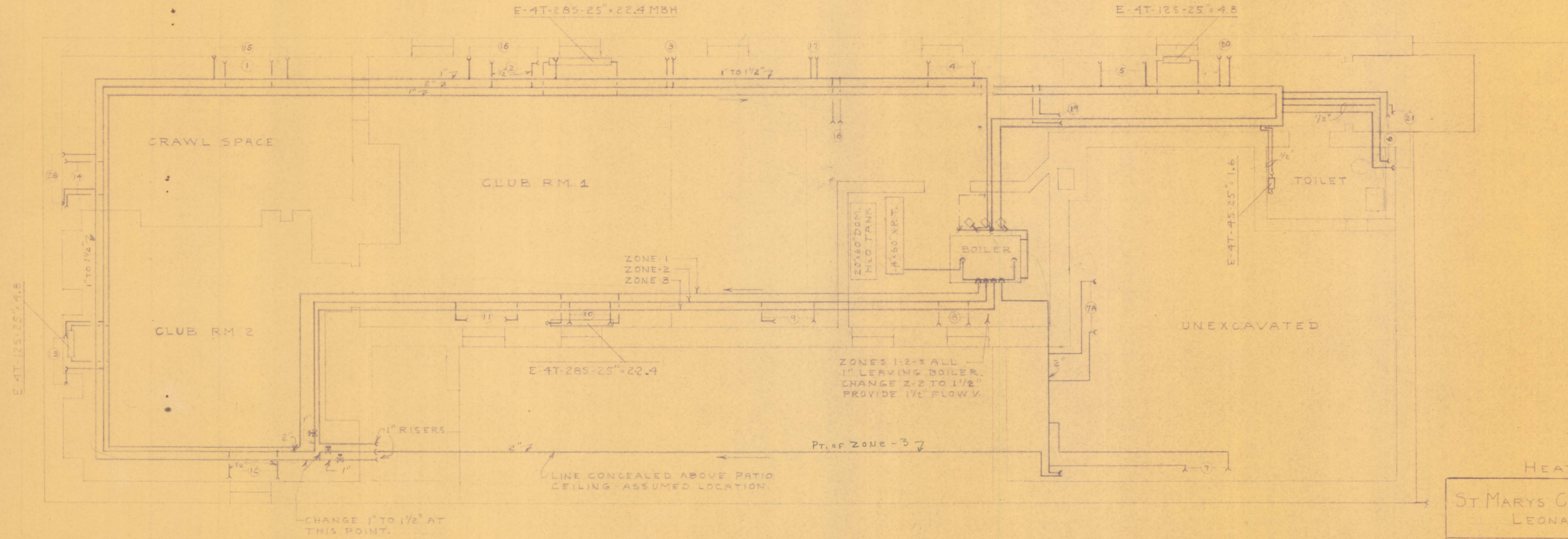


NOTES

- A BOILER - AMERICAN RADIATOR CO EXBROOK C.T. SECTIONAL NO W-2011 SERIES 1B12 OUTPUT IN WATER RATING 2360⁰ EDR NET BTU 381 MBH. OIL FIRED AT 5.0 GAL PER HR.
- B TOTAL BUILDING HEAT LOSS 288.89 MBH - BOILER ADEQUATE IN CAPACITY.
- C CONVECTOR RATINGS FOR FIRST AND SECOND FLOOR BASED ON 190°F WATER IN CONVECTOR AND 20° DROP.
- D TOTAL CONV. OUTPUT FIRST & SECOND FL. 156.9 MBH.
- E TOTAL CONV. OUTPUT FOR 1ST & 2ND FL. IS 212.89 MBH.
- F MINIMUM CONV. OUTPUT FOR 1ST & 2ND FL. INDICATED ON PLANS H-2 & H-3 IS 203.9 MBH.

- G REMOVE 1/4" B.G. CIRC. AT BOILER FOR Z-2 AND INSTALL AT Z-1.
- H INSTALL NEW 2" H.V. CIRC. FOR Z-2 - PROVIDE THROTTLING VALVES IN DOMESTIC H2O HEATER SUPPLY LINE.
- I REALIGN ALL HEATING MAINS - REMOVE ALL TRAPS IN LINES (AIR) - GRADE ALL 1ST AND 2ND FL. RISERS AND RETURNS UP FROM MAINS.
- J PROVIDE CU PLATED CLEVIS HANGERS EVERY 9' FOR 1/2" - 2" MAINS AND EVERY 6' FOR 1" MAINS.
- K REPLACE 1" FLOW CONTROL VALVE FOR ZONE 1.
- L ALL SUPPLY AND RETURN BRANCHES ARE 3/4" UNLESS OTHERWISE NOTED.

- M REMOVE EXISTING RELIEF VALVE ON BOILER AND REPLACE WITH A 1" NO 174A WATTS OR EQUAL - INSERT DIRECTLY TO BOILER - NO VALVE AHEAD AS NOW EXISTS.
- N INSTALL NEW 3/4" WATTS NO 156C OR EQUAL PRESSURE REDUCING AND CHECK VALVE IN COLD WATER MAKE UP.
- O INSTALL BOILER AIRTROL IN EACH 4" BOILER SUPPLY TAPPING - CONNECT AIR VENT LINES TOGETHER AND EXTEND TO EXPANSION TANK - PROVIDE NO 4000 OR EQUAL TANK DRAIN AT THIS POINT.
- P WHERE NEW 1/2" MAIN IS INSTALLED USE 1/2" TACO VENTURI FITTING ON RETURN BRANCH OF EACH CONVECTOR.
- Q FOR ADDITIONAL ENGR. CHANGES SEE LETTER.

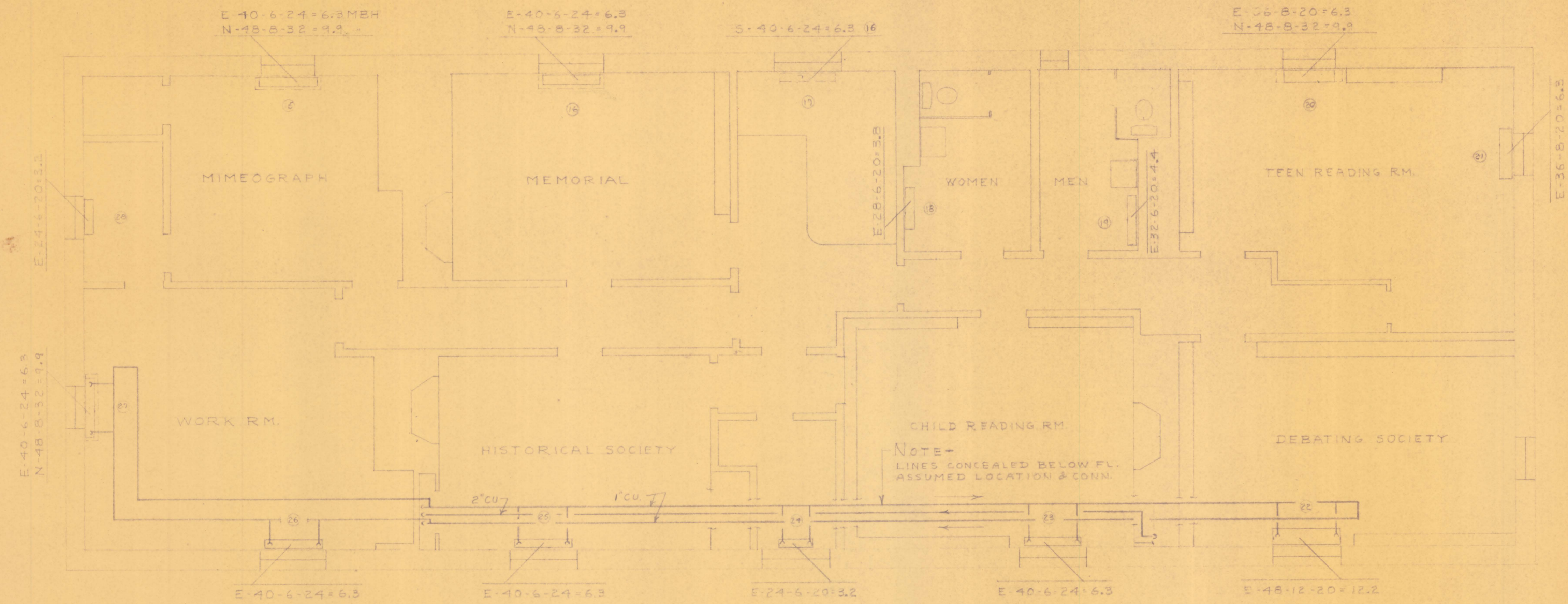


BASEMENT FLOOR PLAN
SCALE - 1/4" = 1'-0"

HEATING

ST. MARYS COUNTY LIBRARY
LEONARDTOWN MD.

EDWARD L. MIDDLETON CONSULTING ENGINEER MECHANICAL LA PLATA, MD.		
MECH. DWG. BY	REVISIONS	
DATE	APPROVED BY	
DWG. NO.	H-1	




NOTE -
LINES CONCEALED BELOW FL.
ASSUMED LOCATION & CONN.

SECOND FLOOR PLAN
SCALE - 1/4" = 1'-0"

HEATING

ST MARYS COUNTY LIBRARY
LEONARDTOWN MD

EDWARD L. MIDDLETON CONSULTING ENGINEER MECHANICAL LA PLATA, MD.		
MECH. DWG. BY E.L.M.	REVISIONS	
DATE 8-6-62		
DWG. NO. H-3	APPROVED BY	