

CAUTION
FISH TRAP AREAS AND STRUCTURES
Mariners are warned that numerous uncharted duck blinds and fishing structures, some submerged, may exist in the area of this chart. Such structures are not charted unless known to be permanent.
Regulations to assure clear passage to and through dredged and natural channels and to established landings are prescribed by the Corps of Engineers in the Code of Federal Regulations.
Definite limits of fish trap areas have been established in some areas and those limits are shown thus:
Where definite limits have not been prescribed the location of fishing structures is restricted only by the regulations.

RESTRICTED AND DANGER AREAS
Watercraft shall upon being warned, immediately vacate the area designated unless given other instructions relative to navigating these areas.

RESTRICTED AREA
(See note)

COURSES
The courses shown are magnetic and must be corrected for any compass deviation. The mileage figures on courses are International Nautical Miles.

CAUTION
Mariners are warned to stay clear of the protective riprap surrounding navigational light structures shown thus:
CAUTION
Temporary defects in aids to navigation are not indicated on this chart. See Notice to Mariners.
Improved channels shown by broken lines are subject to shoaling, particularly at the edges.

POTOMAC RIVER
Numerous markers, established and maintained by the Potomac River Fisheries Commission, mark the Maryland and Virginia jurisdictional fishing boundaries.
The markers display identifying letters "PRM" and "PRV" and numbers.

NAUTICAL CHART 101-SC POTOMAC RIVER DISTRICT OF COLUMBIA MARYLAND - VIRGINIA

MERCATOR PROJECTION AT SCALE 1:80,000
SOUNDINGS IN FEET AT MEAN LOW WATER

HEIGHTS

Heights in Feet above Mean High Water

AUTHORITIES

Hydrography and topography by the Coast and Geodetic Survey with additions and revisions from the Corps of Engineers and Geological Survey.

ABBREVIATIONS

For complete list of Symbols and Abbreviations see C & G S Chart No. 1

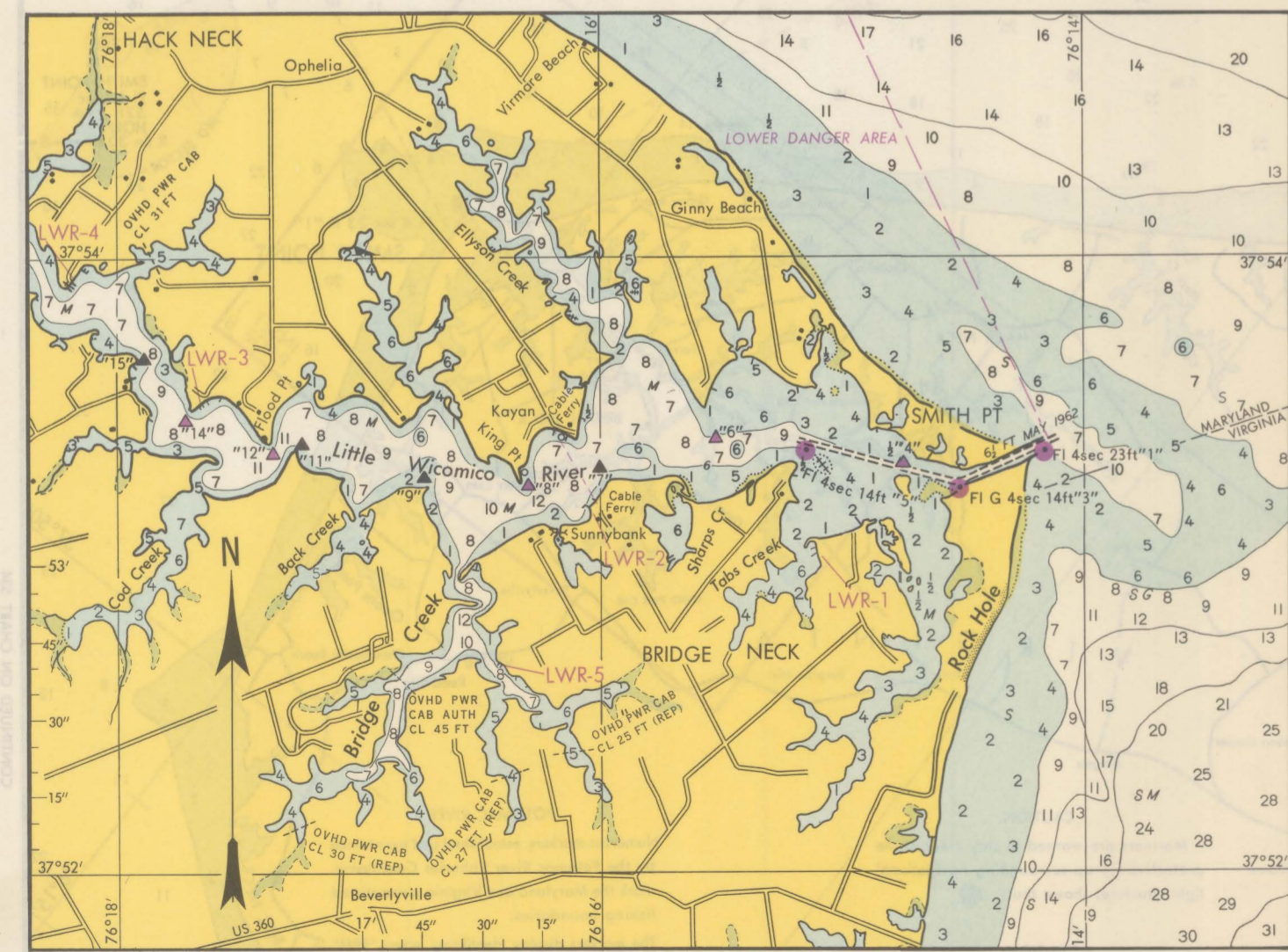
CAUTION

The information contained on this chart reflects conditions as of Notice to Mariners No 52 - Dec. 25, 1965
For subsequent corrections consult the Notice to Mariners.

COURSES

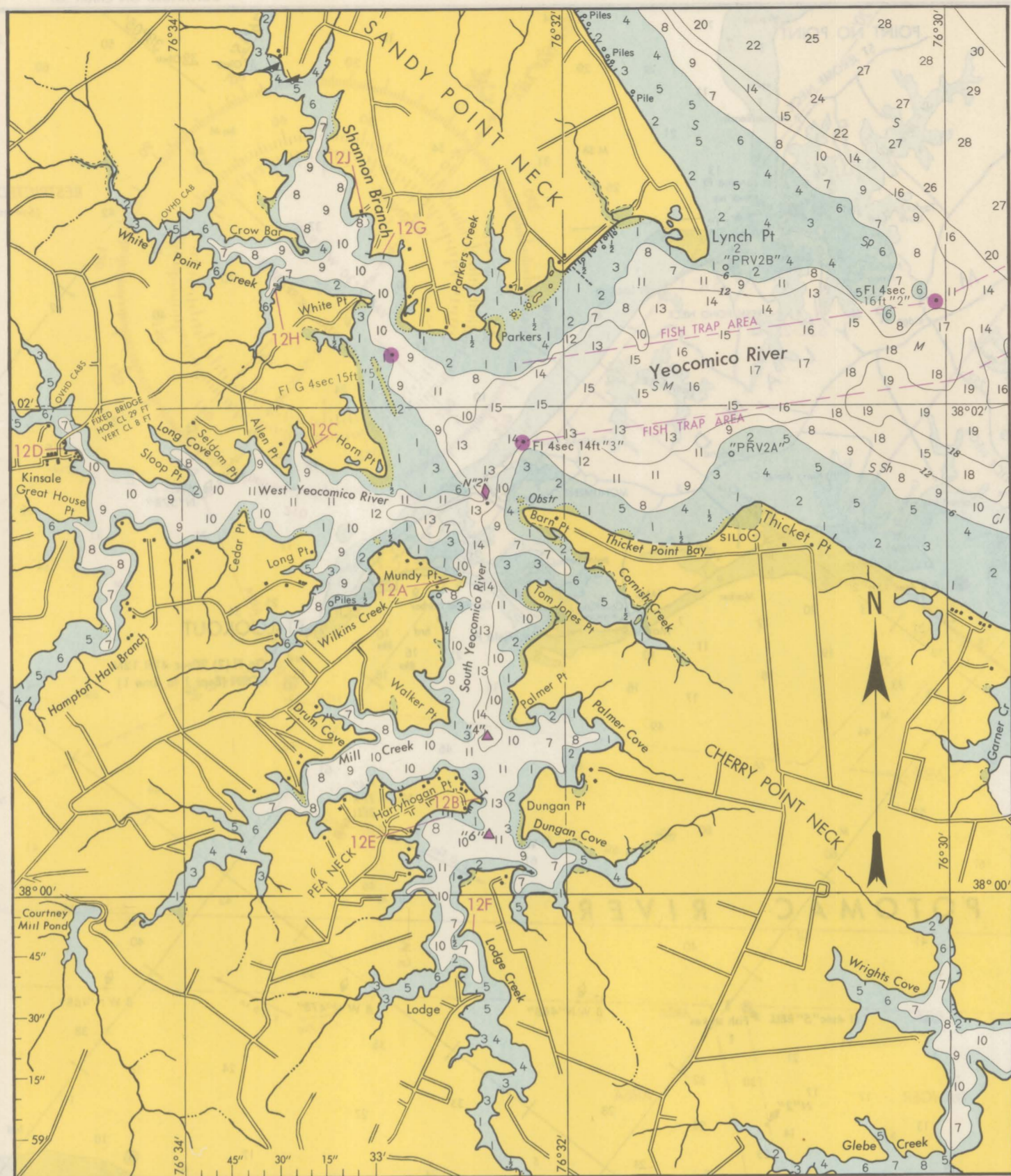
Distances are given in International Nautical Miles. Courses are MAGNETIC and must be corrected for any compass deviation.

Published at Washington, D.C.
U.S. DEPARTMENT OF COMMERCE
ENVIRONMENTAL SCIENCE SERVICES ADMINISTRATION
COAST AND GEODETIC SURVEY



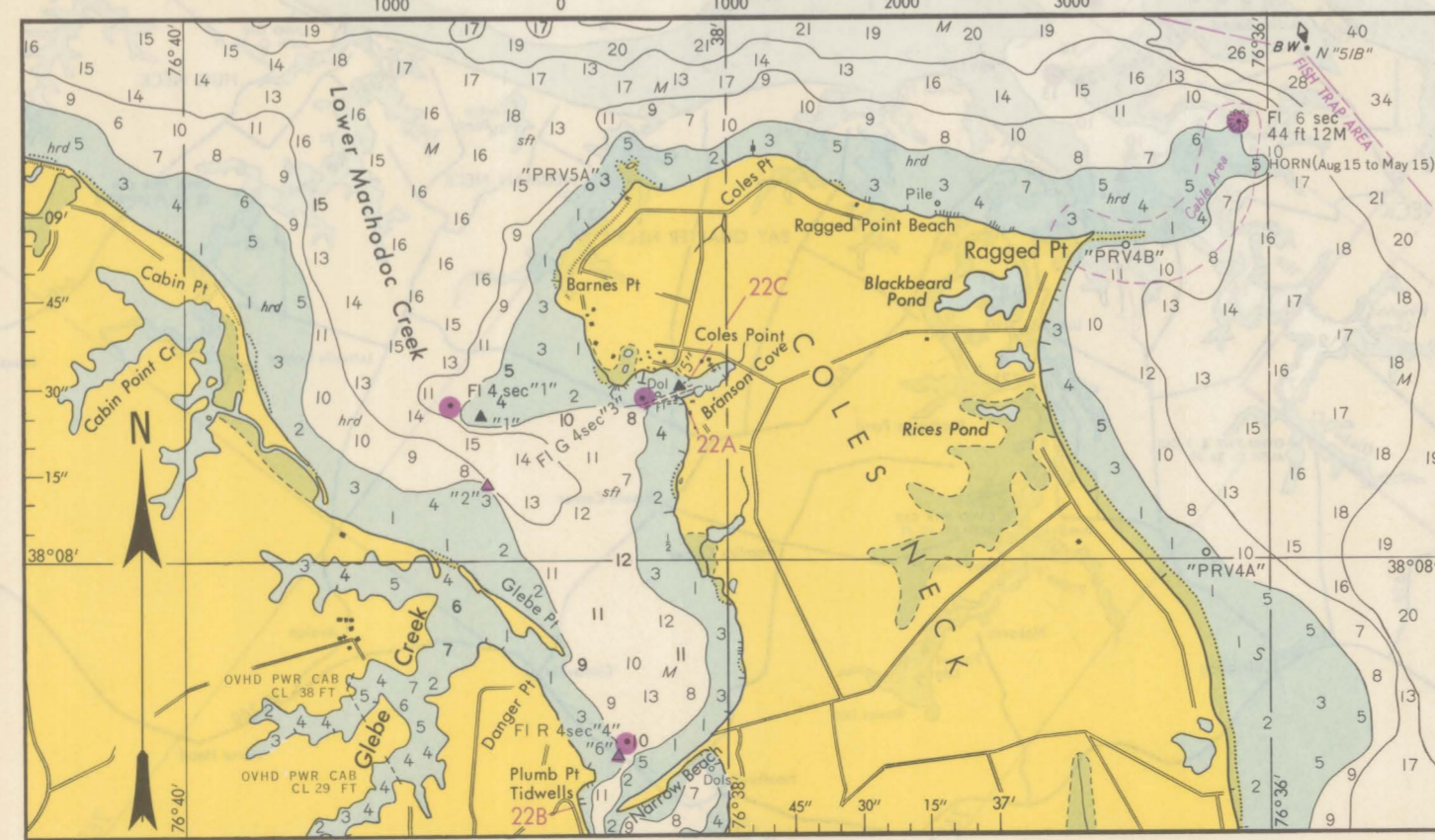
INSET 1

SCALE 1:40,000
NAUTICAL MILES



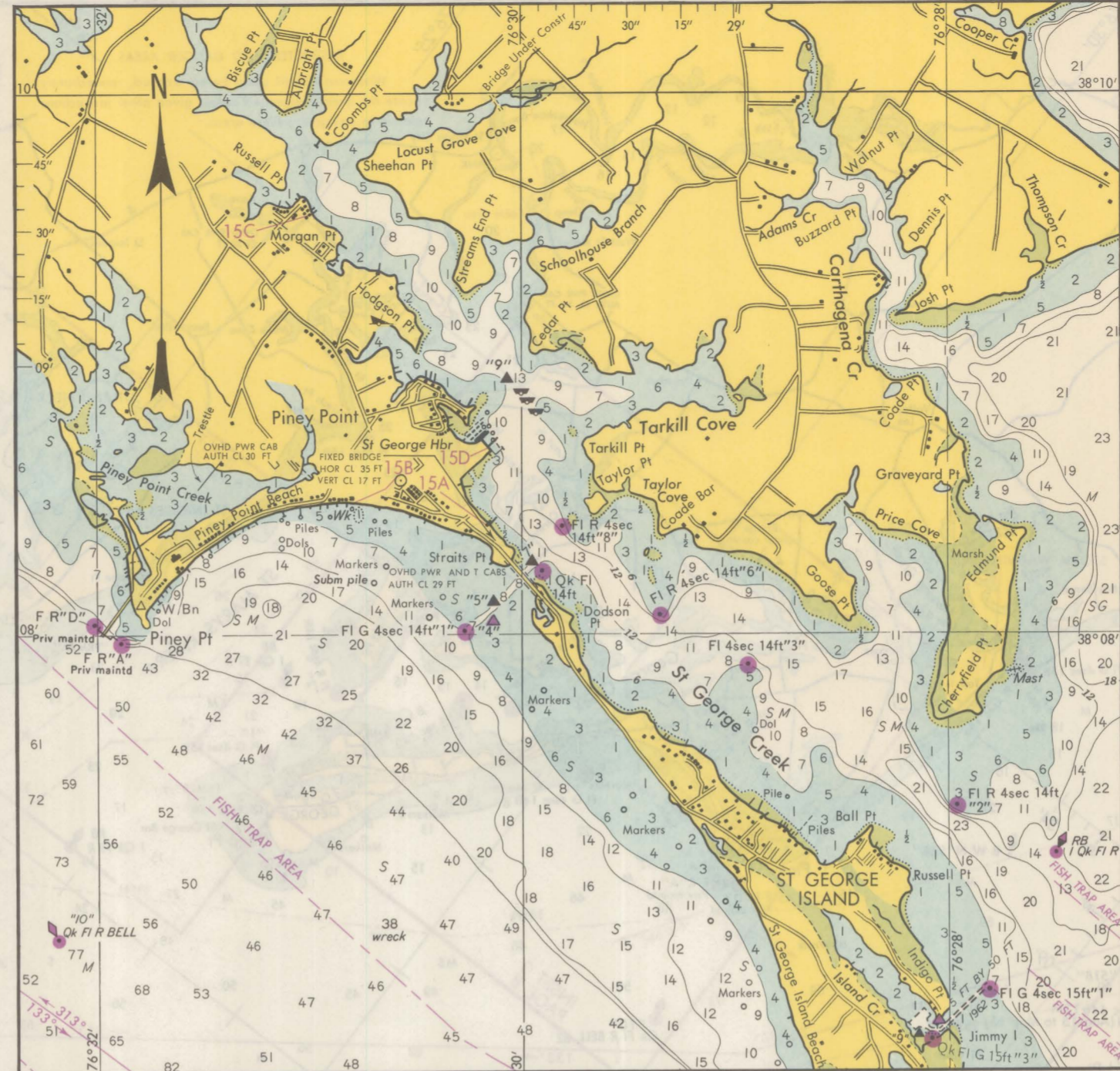
INSET 2

SCALE 1:40,000
NAUTICAL MILES



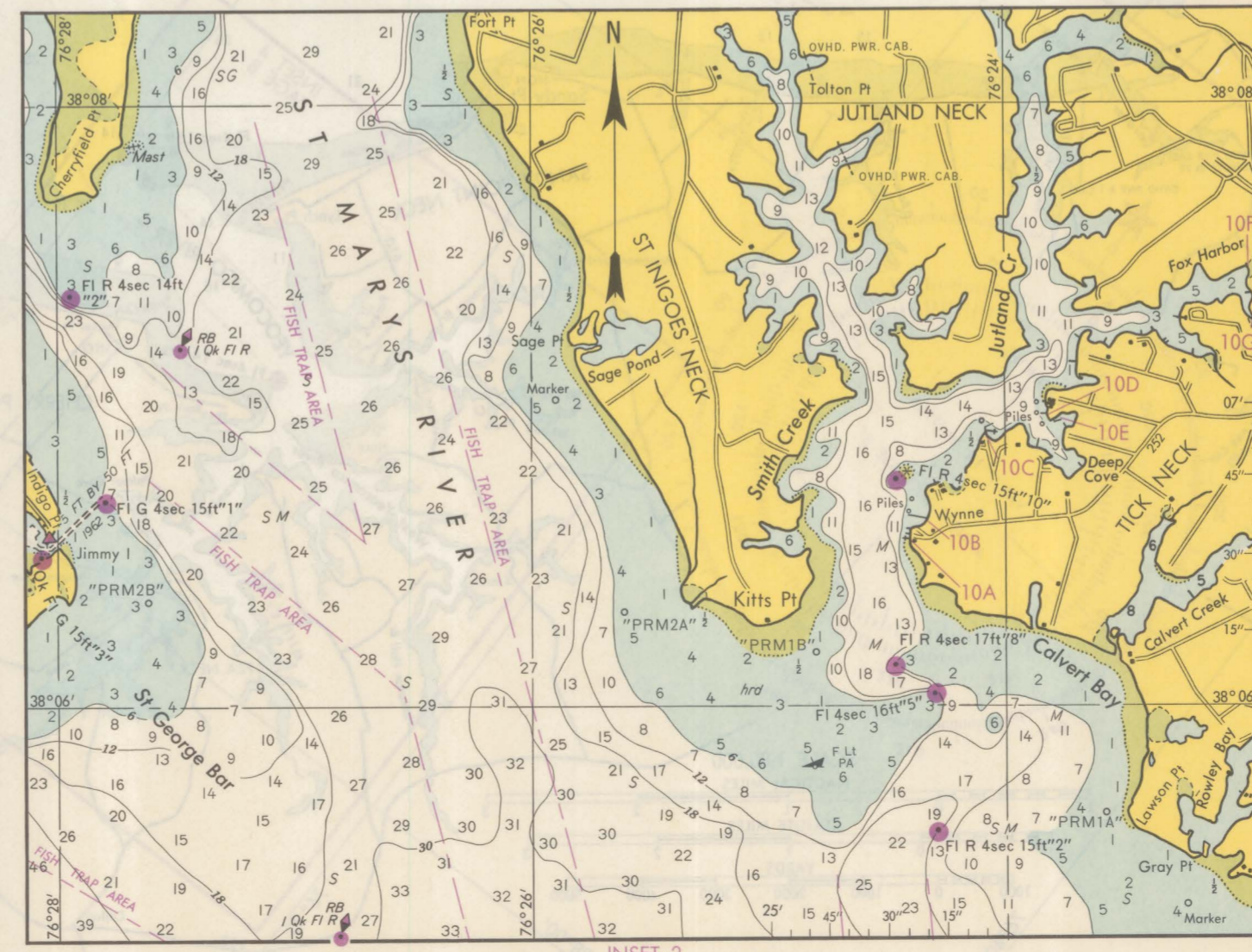
INSET 3

SCALE 1:40,000
NAUTICAL MILES



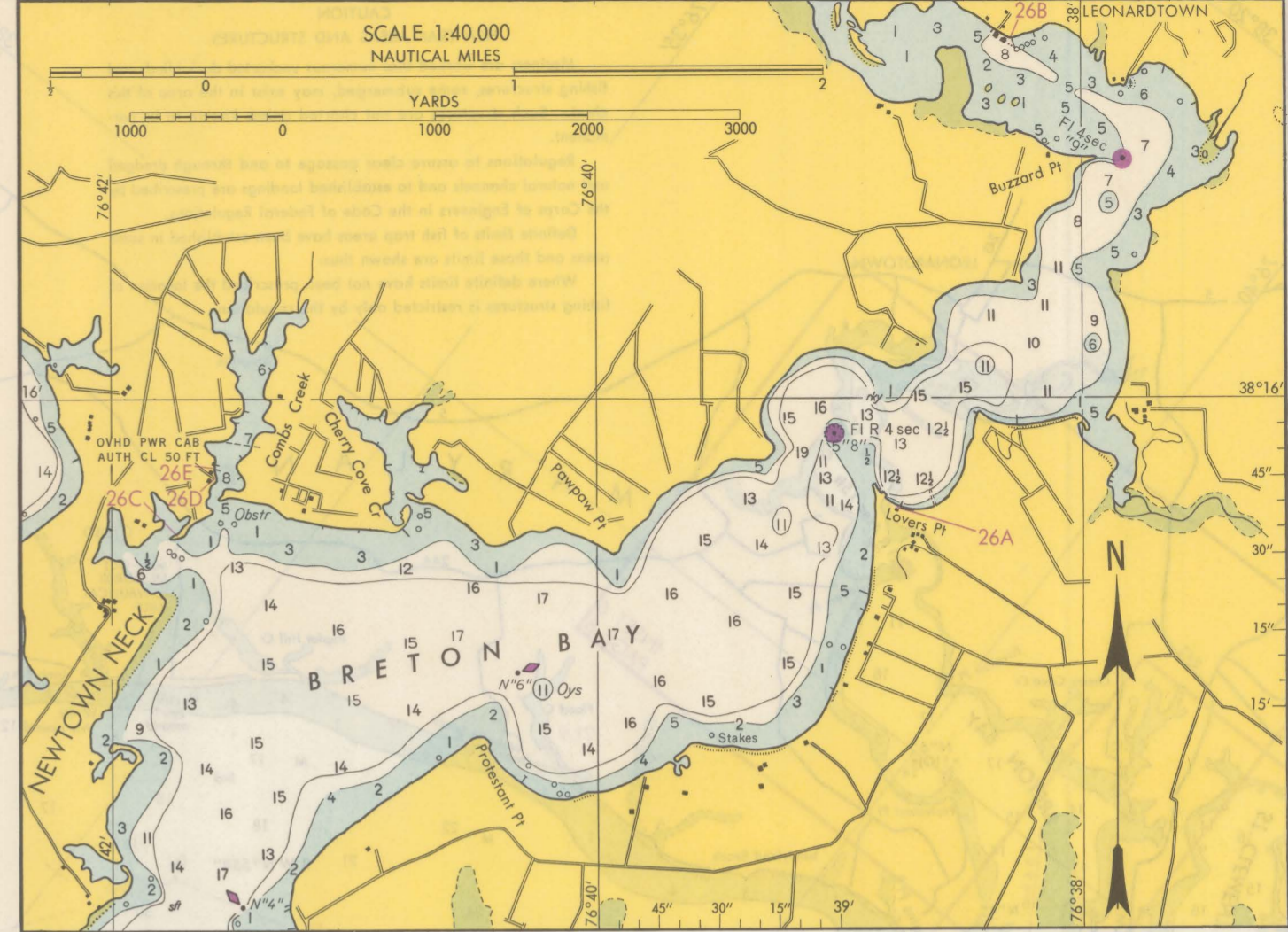
INSET 4

SCALE 1:40,000
NAUTICAL MILES



INSET 5

SCALE 1:40,000
NAUTICAL MILES

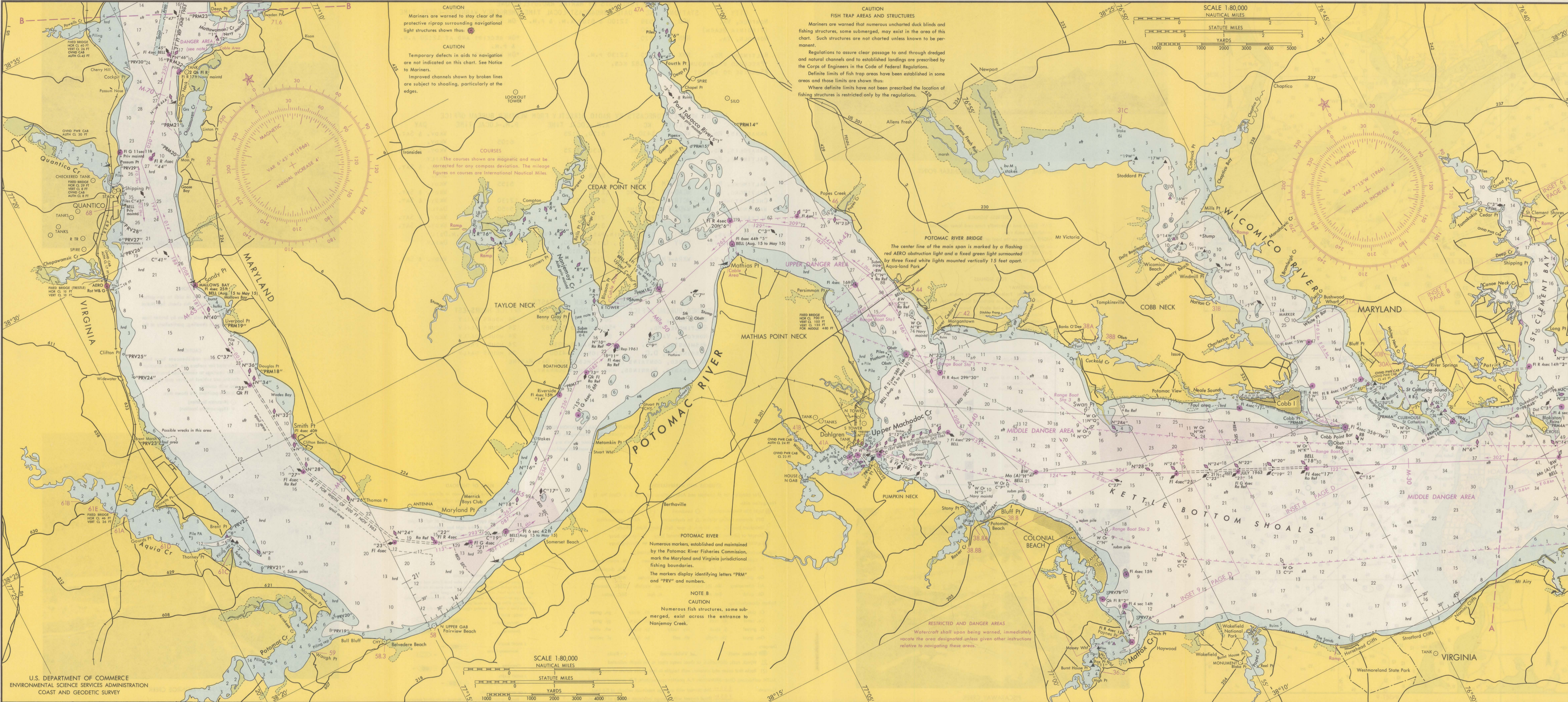


INSET 6



INSET 7

SCALE 1:40,000
NAUTICAL MILES



CAUTION
Mariners are warned to stay clear of the protective riprap surrounding navigational light structures shown thus:

CAUTION
Temporary defects in aids to navigation are not indicated on this chart. See Notice to Mariners.
Improved channels shown by broken lines are subject to shoaling, particularly at the edges.

COURSES
The courses shown are magnetic and must be corrected for any compass deviation. The mileage figures on courses are International Nautical Miles.

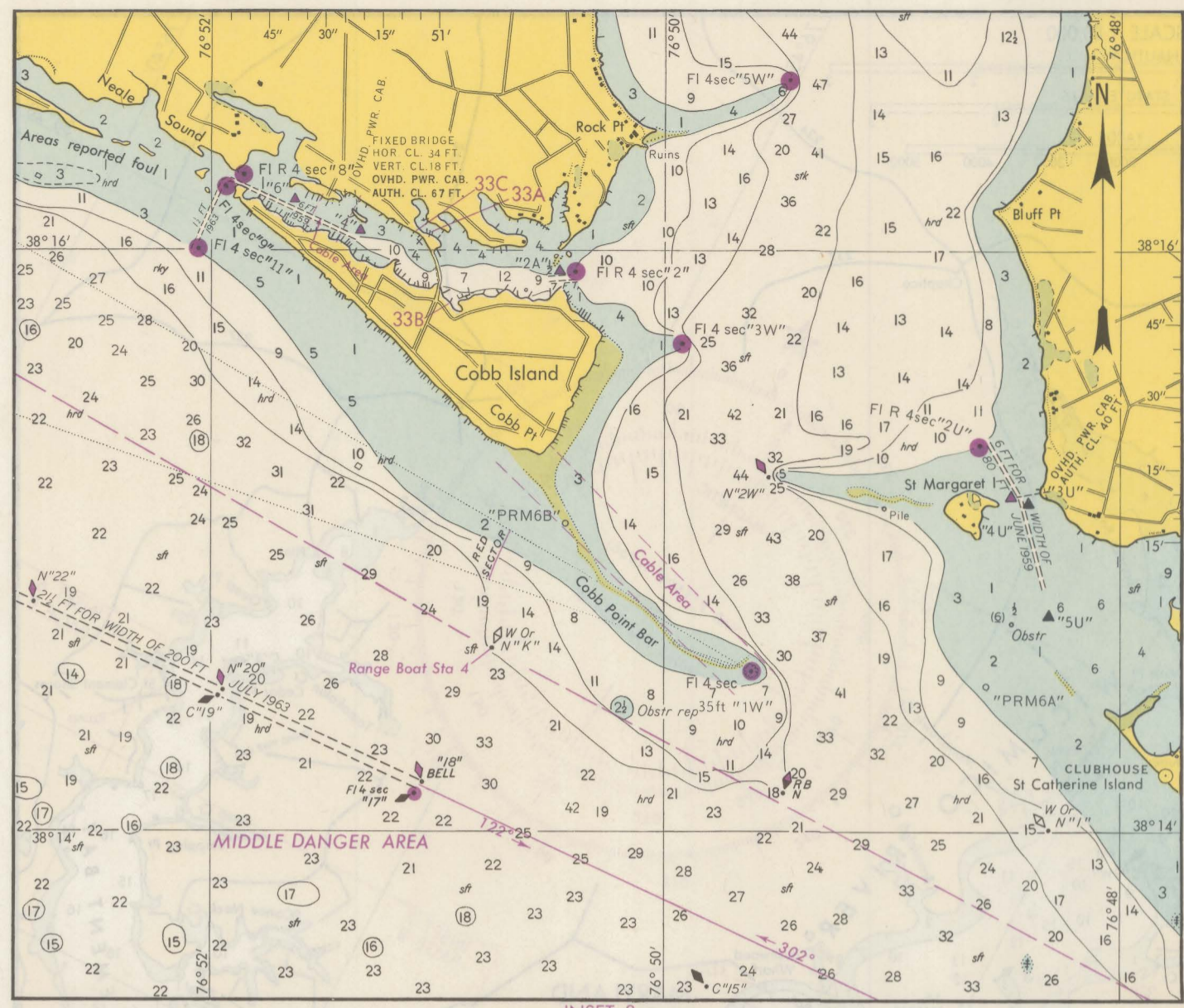
CAUTION
FISH TRAP AREAS AND STRUCTURES
Mariners are warned that numerous uncharted duck blinds and fishing structures, some submerged, may exist in the area of this chart. Such structures are not charted unless known to be permanent.
Regulations to assure clear passage to and through dredged and natural channels and to established landings are prescribed by the Corps of Engineers in the Code of Federal Regulations.
Definite limits of fish trap areas have been established in some areas and those limits are shown thus:
Where definite limits have not been prescribed the location of fishing structures is restricted only by the regulations.

POTOMAC RIVER BRIDGE
The center line of the main span is marked by a flashing red AERO obstruction light and a fixed green light surmounted by three fixed white lights mounted vertically 15 feet apart.

POTOMAC RIVER
Numerous markers, established and maintained by the Potomac River Fisheries Commission, mark the Maryland and Virginia jurisdictional fishing boundaries.
The markers display identifying letters "PRM" and "PRV" and numbers.

NOTE B
CAUTION
Numerous fish structures, some submerged, exist across the entrance to Nanjemoy Creek.

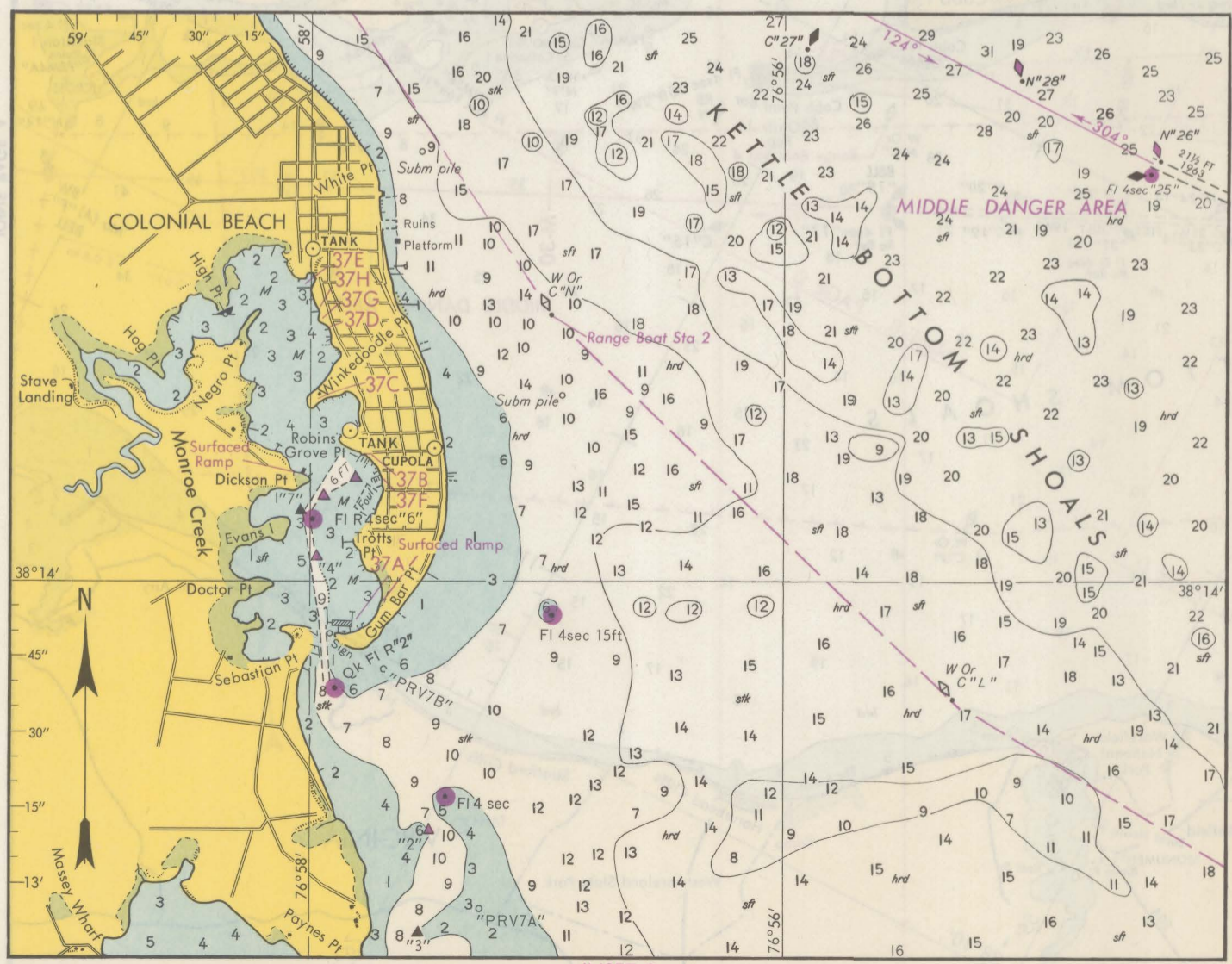
RESTRICTED AND DANGER AREAS
Watercraft shall upon being warned, immediately vacate the area designated unless given other instructions relative to navigating these areas.



INSET B

SCALE 1:40,000 NAUTICAL MILES

RESTRICTED AND DANGER AREAS
Watercraft shall upon being warned, immediately vacate the area designated unless given other instructions relative to navigating these areas.

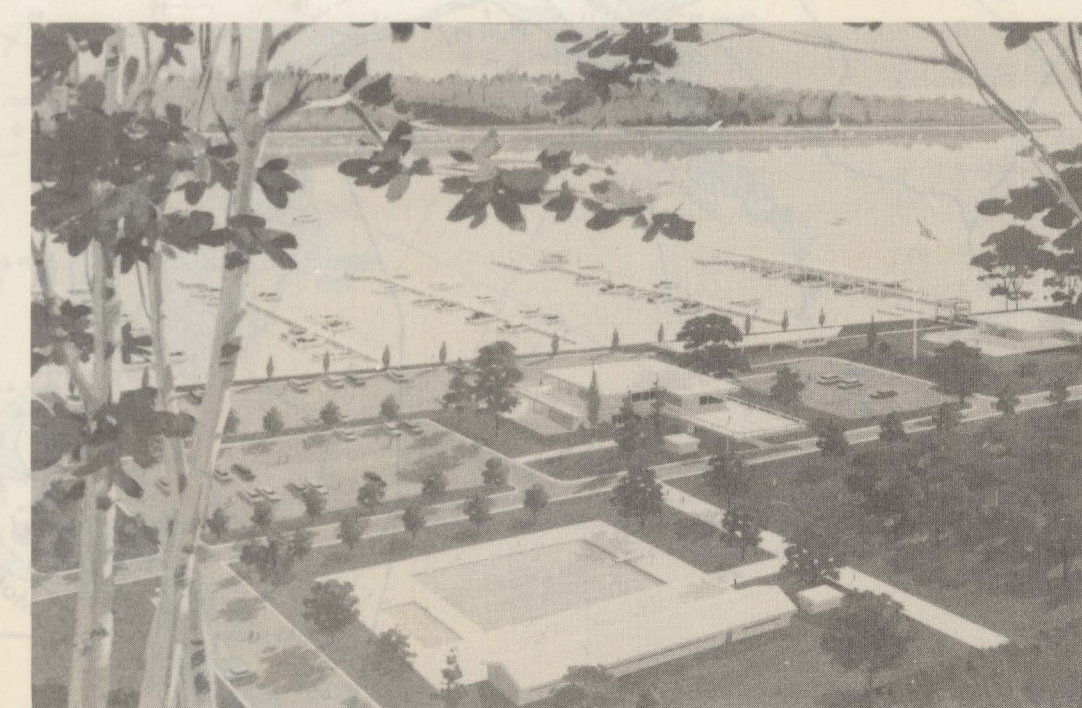


NATIONAL WAR COLLEGE AT GREENLEAF POINT

DISTRESS SIGNALS
DAY: Slowly and repeatedly raise and lower arms outstretched to each side.
NIGHT: Flames on the boat as from a burning tar barrel, oil barrel, and so forth.
DAY OR NIGHT: Continuous sounding of fog signal apparatus, or firing a gun.

FOG SIGNALS
WHILE UNDERWAY
Motorboats: Prolonged blast every minute.
Sailboats: When on starboard tack one blast, port tack 2 blasts and wind abaft of beam 3 blasts.
Boats towing or towed: One prolonged and 2 short blasts every minute.
AT ANCHOR
All boats: 5 seconds of bell every minute.

STORM WARNINGS	DAY SIGNALS	NIGHT SIGNALS
SMALL CRAFT Winds forecast up to 33 knots and/or Sea Conditions dangerous to Small Craft.	Two short horizontal bars	Two short vertical bars
GALE Winds forecast from 34-47 knots.	Two long horizontal bars	Two long vertical bars
WHOLE GALE Winds forecast from 48-63 knots.	Two long horizontal bars with a triangle in the middle	Two long vertical bars with a triangle in the middle
HURRICANE WARNING Winds forecast 64 knots and above.	Two long horizontal bars with a square in the middle	Two long vertical bars with a square in the middle



PISCATAWAY CREEK

WEATHER FORECASTS BY MARINE RADIOTELEPHONE

CITY	STATION	KC	DAILY BROADCAST-LOCAL TIME	EMERGENCY WARNINGS-LOCAL TIME
NORFOLK, VA. (VIRGINIA BEACH)	WGB	2538	12:00 & 6:00 A.M. & P.M.	ON RECEIPT
NORFOLK, VA.	NMN	2670		*ON RECEIPT AND AT 12:20 A.M. & P.M.
BALTIMORE, Md.	NMX	2670	12:30 P.M.	*ON RECEIPT

*PRECEDED BY ANNOUNCEMENT ON 2182 KCS.
#SUNRISE TO SUNSET

MARINE WEATHER FORECASTS BY RADIO DIRECTLY FROM WEATHER BUREAU OFFICE

CITY	STATION	KC	A.M.-LOCAL TIME	P.M.-LOCAL TIME	DAY
ANNAPOLIS, Md.	WNAV	1430	6:30, 7:25	6:05	WKDY. & SAT.
ANNAPOLIS, Md.	WNAV-FM	99.1MC	6:30, 7:25		WKDY. & SAT.
BALTIMORE, Md.	WBAL	1090	7:10 8:58	12:08	DAILY
BALTIMORE, Md.	WBAL-FM	97.9MC		5:55	WKDY.
BALTIMORE, Md.	WCAO-FM	102.7MC	11:45		WKDY. & SAT.
CHESTERTOWN, Md.	WCTR	1530	6:30, 7:30	12:30	WKDY. & SAT.
WASHINGTON, D.C.	WWDC-FM	101.1MC		5:50	DAILY
ALEXANDRIA, Va.	WPIK	730	7:30	12:05	WKDY. & SAT.
HAMPTON, Va.	WVEC	1490	8:05	1:05, 6:05	WKDY. & SAT.
NEWPORT NEWS, Va.	WGH	1310	15MIN. PAST EACH HR. FROM 6:15A.M. TO 11:15P.M.		DAILY
PORTSMOUTH, Va.	WAVY	1350	(6:45, 7:00, 7:30 8:00, 8:30)	12:10	DAILY
WOODBIDGE, Va.	WXRA-FM	105.9MC	7:30	12:05	WKDY. & SAT.

WEATHER BUREAU OFFICE TELEPHONE NUMBER

BALTIMORE, Md.	SOUTHFIELD 6-2434	24 HOURS DAILY
BALTIMORE, Md.	*SOUTHFIELD 6-3382	24 HOURS DAILY
NORFOLK, Va.	853-3013	24 HOURS DAILY
WASHINGTON, D.C.	NATIONAL 8-4830	24 HOURS DAILY
WASHINGTON, D.C.	*NATIONAL 8-4100	24 HOURS DAILY

*RECORDED, CONTAINS LATEST CHESAPEAKE BAY MARINE FORECASTS, WARNINGS, AND WEATHER SUMMARY.

CHESAPEAKE BAY SEA CONDITION REPORTS
WMAL, 630c, Washington, D.C.
Seasonal, on-the-scene reports are broadcast during the day on weekends and holidays.

SYMBOLS AND ABBREVIATIONS
(For complete list of Symbols and Abbreviations, see C. & G. S. Chart No. 1)

Navigation aids:
Light (On fixed structure) ◉ Landmark ◉ R. Bn. radiobeacon
DFS distance finding station ◉ Bn daybeacon AERO. aeronautical
Unlighted buoy (C. can, N. nun, S. spar, Bell, Gong, Horn, Whistle)
Danger or junction buoy ◉ Mid-channel buoy ◉ Fish trap buoy
Lighted buoy ◉ Anchorage buoy ◉ Mooring buoy

Light characteristics: (Lights are white unless otherwise indicated.)

F. fixed	I. Qk. interrupted quick	G. green	M. nautical miles
Fl. flashing	E. Int. equal interval	R. red	DIA. diaphane
Gp. group	Occ. occulting	m. minutes	WHIS. whistle
Alt. alternating	Mo. (A) morse code	sec. seconds	OBSC. obscured
Qk. quick	Rot. rotating	ft. feet	SEC. sector

Bottom characteristics:

Cl. clay	M. mud	Oys. oyster	stk. sticky	gn. green
Co. coral	Rk. rock	hrd. hard	bk. black	gy. gray
G. gravel	S. sand	rky. rocky	br. brown	wh. white
Gr. grass	Sh. shells	sft. soft	bu. blue	yl. yellow

Dangers:
Sunken wreck ◉ Visible wreck + ✕ = Rocks
Wreck, rock, obstruction, or shoal swept clear to the depth indicated
Rocks that cover and uncover, with heights in feet above datum of soundings
AUTH. authorized; Obstr. obstruction; P.A. position approximate; E.D. existence doubtful

Currents:
E 0.6 kn. ebb current with average maximum velocity of 0.6 knot.
F 0.5 kn. flood current with average maximum velocity of 0.5 knot.

RULES OF THE ROAD
Motorless craft have right-of-way in almost all cases.
A motorboat being overtaken has right-of-way.
Motorboats approaching head to head or nearly so should pass port to port.
When motorboats approach each other at right angles or obliquely the boat on the right has right-of-way.
Motorboats must keep to the right in narrow channels, when safe and practicable.

WHISTLE SIGNALS
Signal given by one boat is repeated by other boat if safe, and understood.
Use whistle signals when boats are in sight of each other in the daytime by sight of the boat itself, or by night by seeing its signal lights.
When approaching a bend, sound one long blast. If answered immediately upon sighting other boat give usual passing signals.
A long blast is used as a warning signal when leaving a slip.

1 SHORT BLAST
Meeting head-on
Overtaking

2 SHORT BLASTS
Maintaining Course
Overtaking

3 SHORT BLASTS
Engine is going astern

4 OR MORE SHORT BLASTS
Danger, or first boat's signal not understood, or considered dangerous.



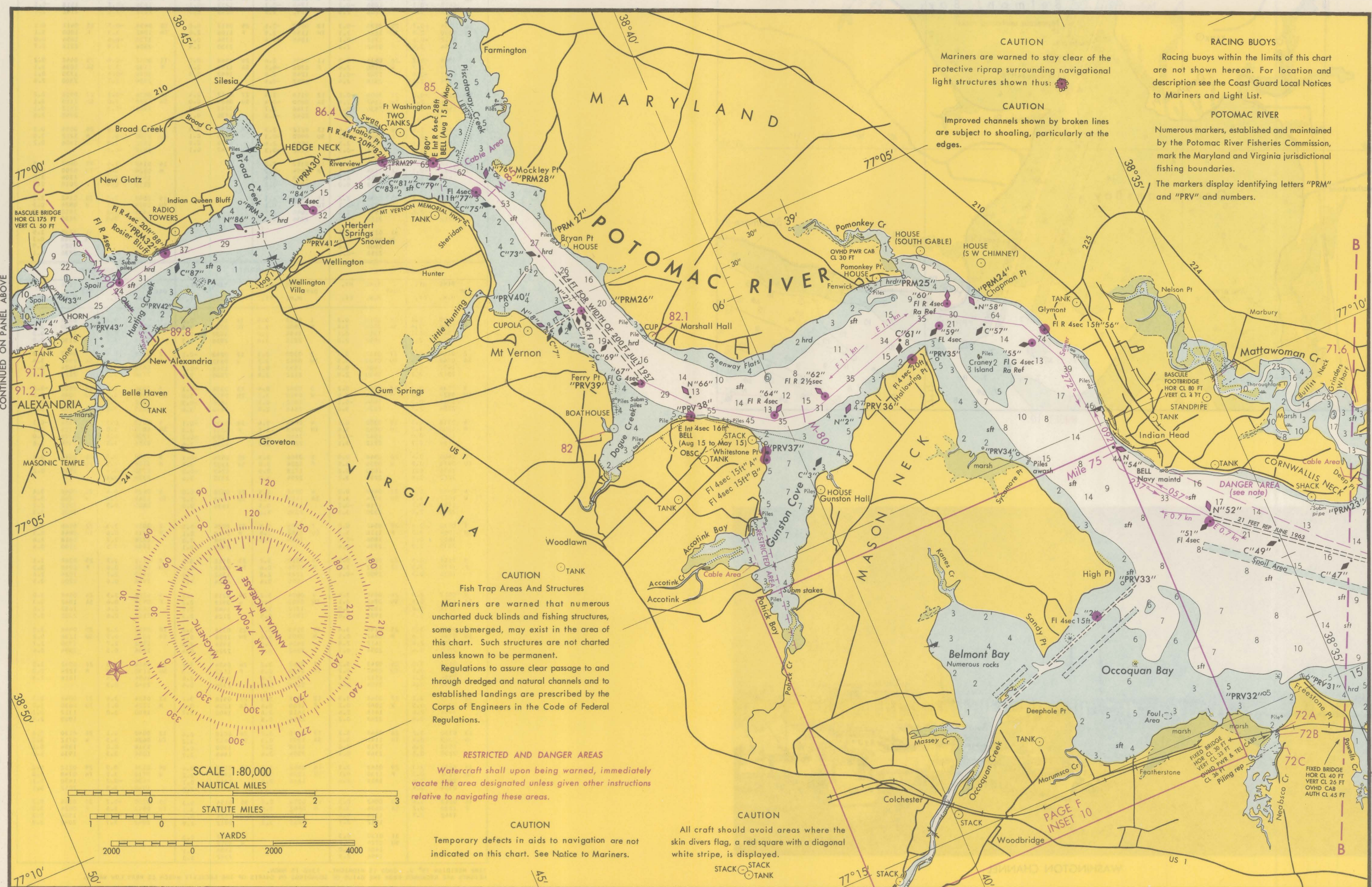
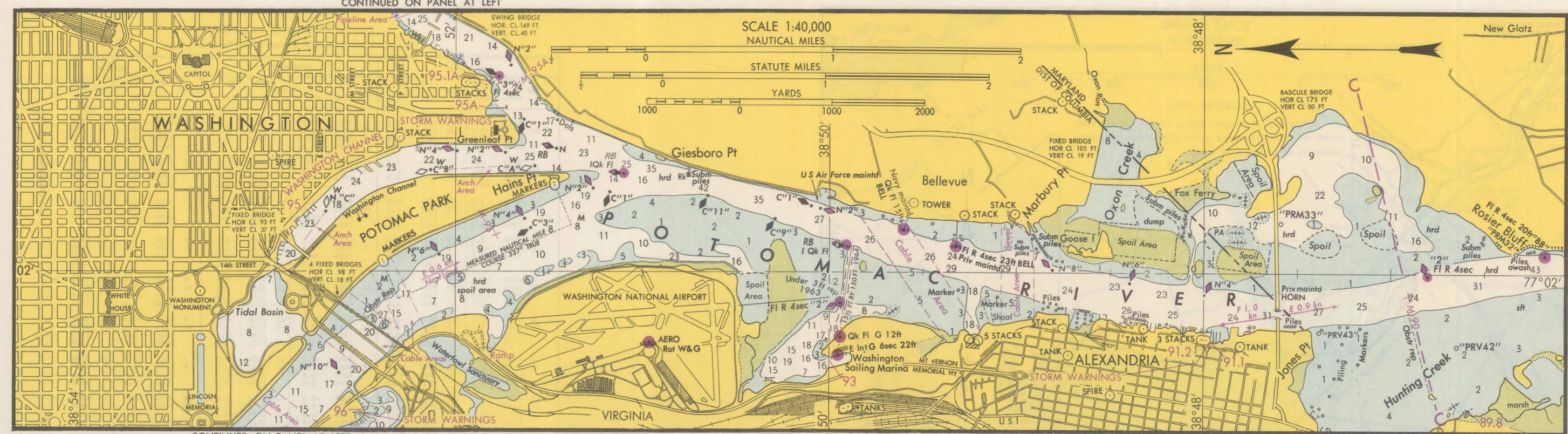
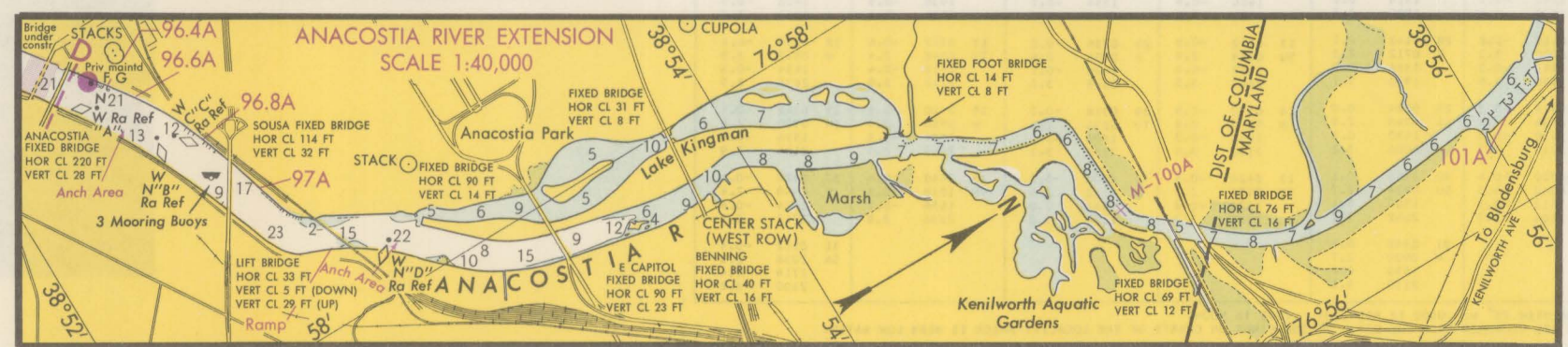
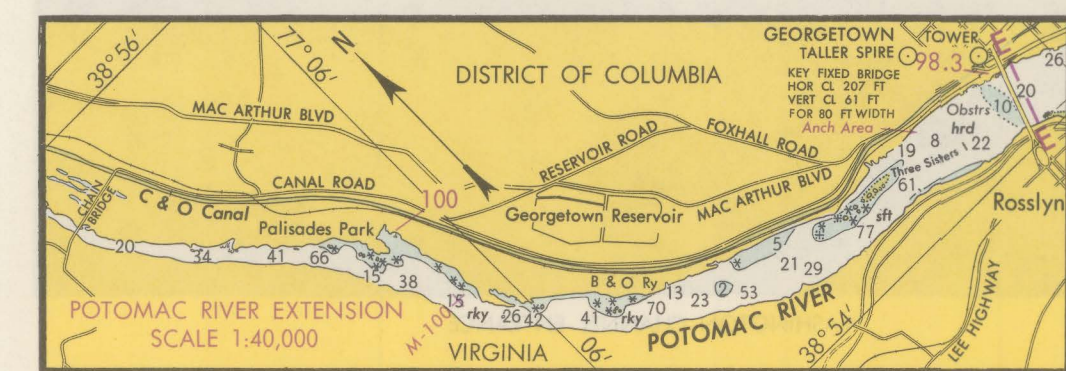
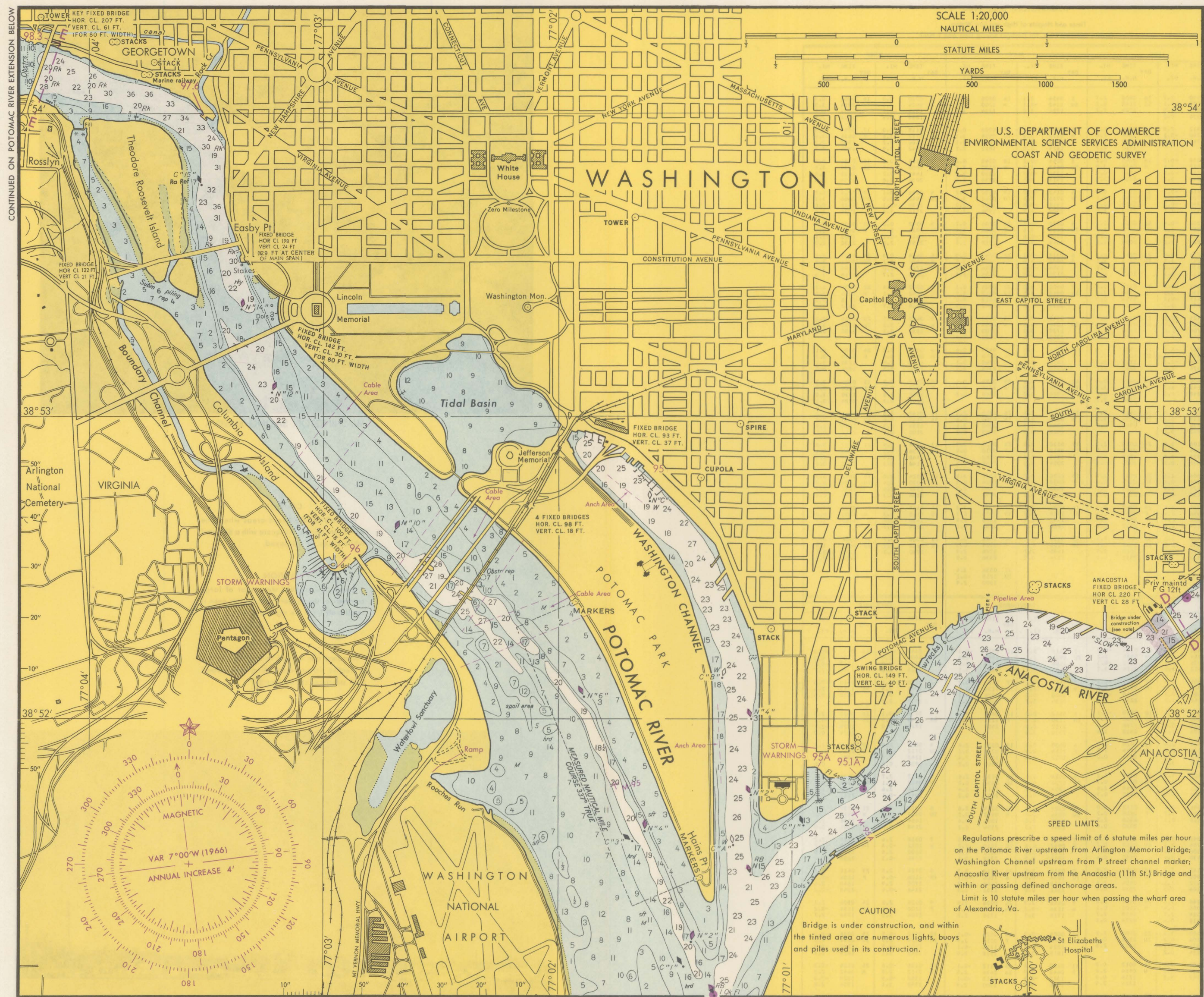
COBB ISLAND AND NEALE SOUND

CAUTION
Temporary defects in aids to navigation are not indicated on this chart. See Notice to Mariners.
Improved channels shown by broken lines are subject to shoaling, particularly at the edges.

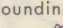
CAUTION
Only marine radiobeacons have been calibrated for surface use. Radio direction-finder bearings to commercial broadcasting stations are subject to error and should be used with caution.
Station positions are shown thus:
◉ (Accurate location)
◉ (Approximate location)



ENTRANCE - MONROE CREEK





WASHINGTON CHANNEL ENTRANCE. WASHINGTON SAILING MARINA. CAUTION. Small craft should stay clear of large commercial and government vessels even if small-craft have the right-of-way. CAUTION. Mariners are warned to stay clear of the protective riprap surrounding navigational light structures shown thus: . WATERCRAFT SHALL UPON BEING WARNED, IMMEDIATELY VACATE THE AREA DESIGNATED UNLESS GIVEN OTHER INSTRUCTIONS RELATIVE TO NAVIGATING THESE AREAS.

WASHINGTON, D.C., 1966. Times and Heights of High and Low Waters. Eastern Standard Time, For Daylight Saving Time Add 1 Hour.

JANUARY				FEBRUARY				MARCH				
DAY	TIME	HT.	DAY	TIME	HT.	DAY	TIME	HT.	DAY	TIME	HT.	
H.M.	FT.		H.M.	FT.		H.M.	FT.		H.M.	FT.	H.M.	FT.
1	0218	2.2	16	0548	2.2	1	0206	2.3	16	0348	2.3	
SA	0918	-0.1	SU	1024	-0.4	TU	1018	-0.2	W	1148	-0.5	
1458	2.7		1718	2.8		1718	2.8		1724	2.9		
2300	-0.1		2306	-0.4		2324	-0.2		2354	0.1		

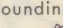
WASHINGTON, D.C., 1966. Times and Heights of High and Low Waters. Eastern Standard Time, For Daylight Saving Time Add 1 Hour. TIME MERIDIAN 79° W. 0000 IS MIDNIGHT. 1200 IS NOON. HEIGHTS ARE RECKONED FROM THE DATUM OF SOUNDINGS ON CHARTS OF THE LOCALITY WHICH IS NEAR LOW WATER.

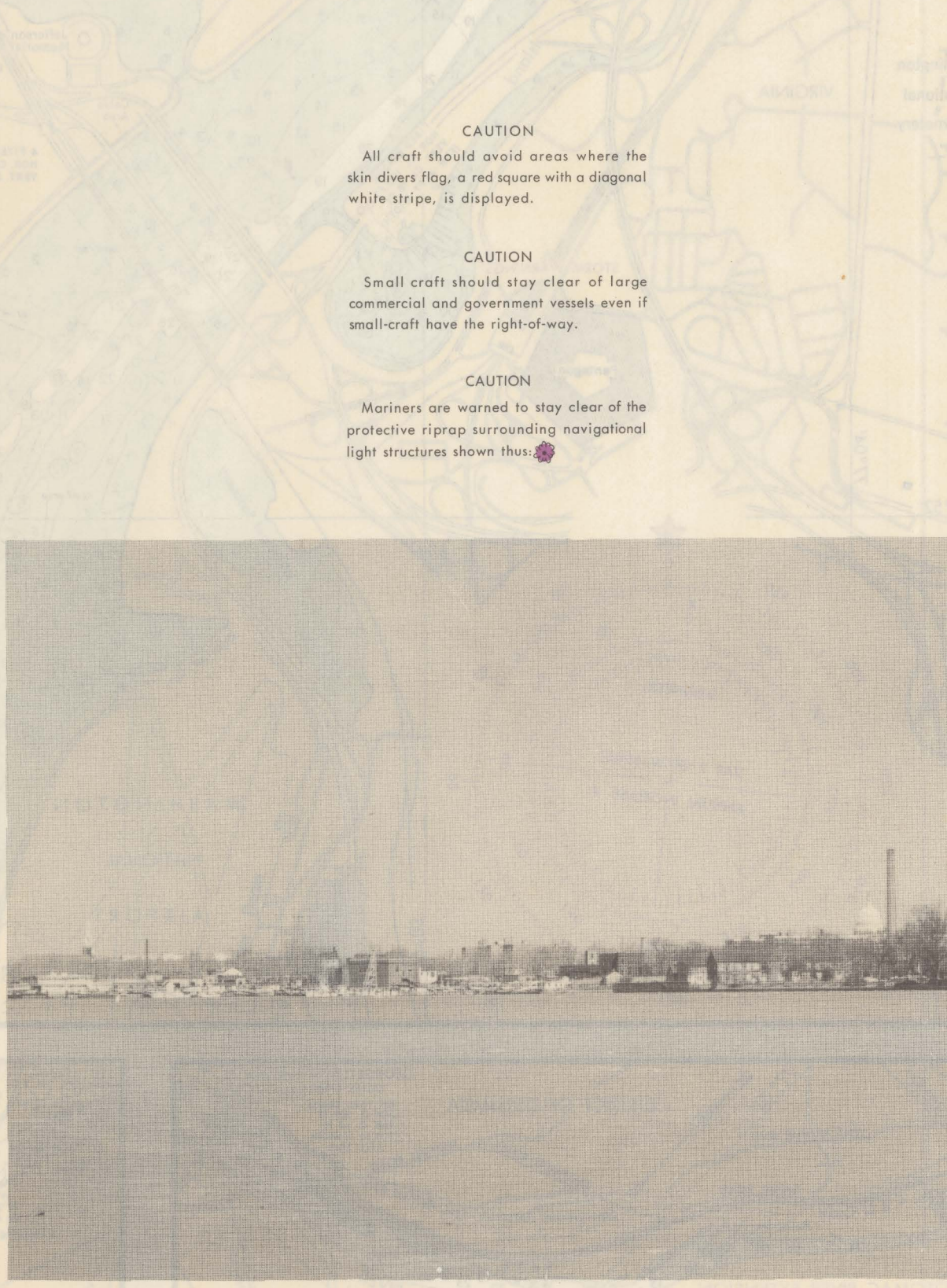
WASHINGTON, D.C., 1966. Times and Heights of High and Low Waters. Eastern Standard Time, For Daylight Saving Time Add 1 Hour.

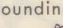
APRIL				MAY				JUNE				
DAY	TIME	HT.	DAY	TIME	HT.	DAY	TIME	HT.	DAY	TIME	HT.	
H.M.	FT.		H.M.	FT.		H.M.	FT.		H.M.	FT.	H.M.	FT.
1	0400	2.7	16	0506	2.7	1	0454	3.1	16	0504	3.0	
F	1100	0.1	SA	1148	0.2	SU	1142	-0.1	M	1200	0.2	
1458	2.9		1724	2.9		1724	2.9		1724	2.9		
2300	-0.1		2306	-0.4		2306	-0.4		2306	-0.4		

WASHINGTON, D.C., 1966. Times and Heights of High and Low Waters. Eastern Standard Time, For Daylight Saving Time Add 1 Hour. TIME MERIDIAN 79° W. 0000 IS MIDNIGHT. 1200 IS NOON. HEIGHTS ARE RECKONED FROM THE DATUM OF SOUNDINGS ON CHARTS OF THE LOCALITY WHICH IS NEAR LOW WATER.



WASHINGTON SAILING MARINA. CAUTION. Small craft should stay clear of large commercial and government vessels even if small-craft have the right-of-way. CAUTION. Mariners are warned to stay clear of the protective riprap surrounding navigational light structures shown thus: .



WASHINGTON CHANNEL ENTRANCE. WASHINGTON SAILING MARINA. CAUTION. Small craft should stay clear of large commercial and government vessels even if small-craft have the right-of-way. CAUTION. Mariners are warned to stay clear of the protective riprap surrounding navigational light structures shown thus: .