

INDEX	
DWG. NO.	TITLE
1	TITLE SHEET
A-1	BASEMENT PLAN
A-2	FIRST FLOOR PLAN
A-3	SECOND FLOOR PLAN
A-4	ELEVATION SHEET
A-5	SECTION "AA" & "BB"
A-6	SECTION "CC" & "DD"
A-7	SECTION "EE" & "FF"
A-8	SECTION "GG"
A-9	SECTION "HH"
A-10	SECTION "KK"
A-11	DETAIL SHEET - BOILER RM. & FIRE STAIR
A-12	DETAIL SHEET - STONE & STEEL STEPS
A-13	DETAIL SHEET - CIRCULATION DECK
A-14	DETAIL SHEET - BOOK SHELF
A-15	DETAIL SHEET - CABINET & DOORS
A-16	FINISH SCHEDULE SHEET
S-1	FRAMING PLAN - FIRST FLOOR
MECHANICAL	
M-1	BASEMENT FLOOR PLAN
M-2	FIRST FLOOR PLAN
M-3	SECOND FLOOR PLAN
ELECTRICAL	
E-1	BASEMENT FLOOR PLAN
E-2	FIRST FLOOR PLAN
E-3	SECOND FLOOR PLAN
E-4	SCHEDULE, RISER DIAGRAM & LEGEND SHEET

PUBLIC PARKING AREA

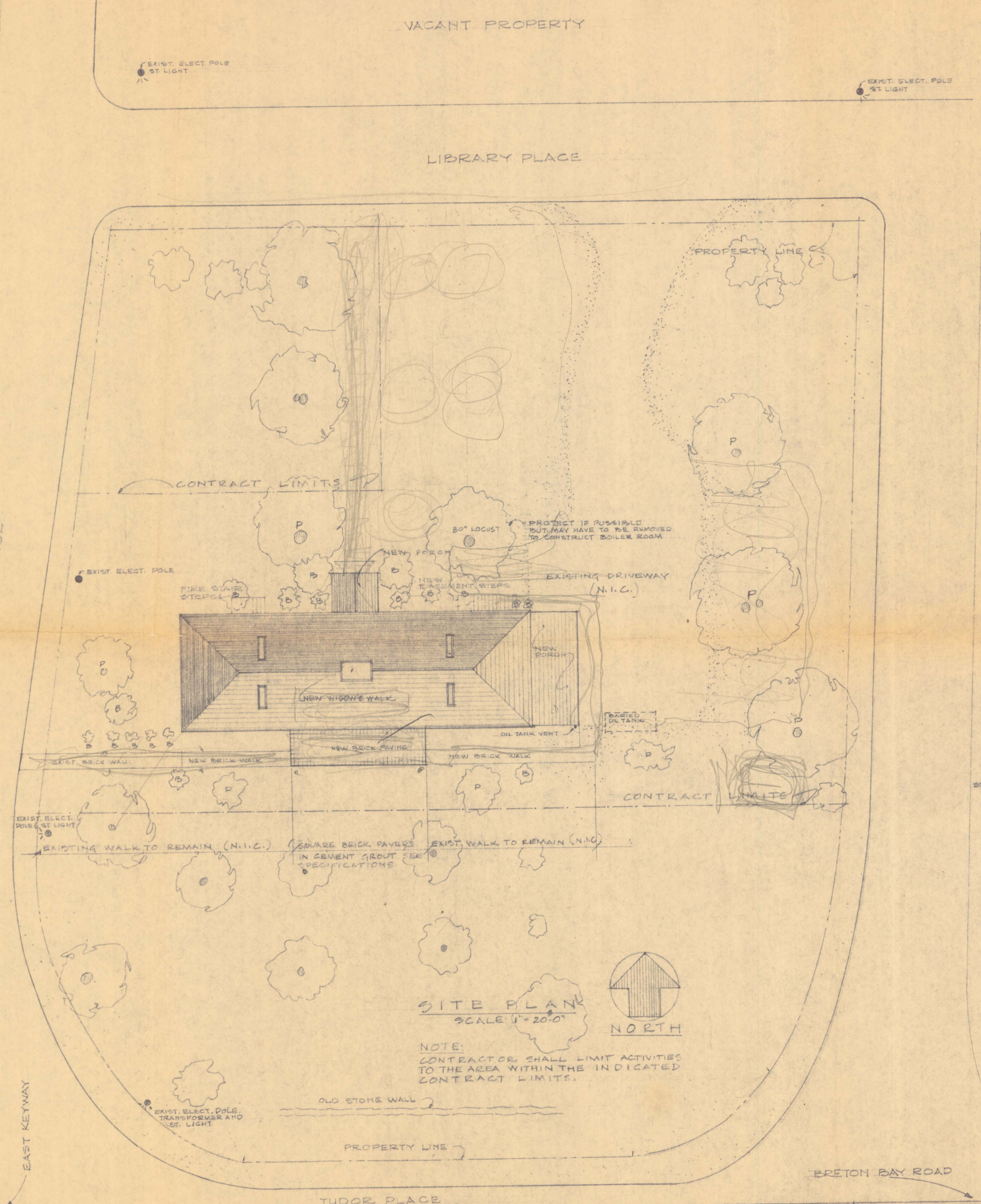
← GOVERNMENT BUILDINGS

TUDOR PLACE

TUDOR HALL ROAD

RESIDENTIAL IMPROVEMENT

EAST KEYWAY



RESIDENTIAL DEVELOPMENT

the
RESTORATION
and
IMPROVEMENT
of
TUDOR HALL
leonardtown, maryland

- D- PRUNE, DIG, BALL AND BURLAP AND HEBB IN WHERE DIRECTED
- P- PROVIDE PROTECTIVE COVERING
- CONTRACT LIMITS - ALL MATERIAL STORAGE OR OTHER USES TO BE CONFINED TO THIS AREA.

SITE PLAN
SCALE 1" = 20'-0"

NOTE:
CONTRACTOR SHALL LIMIT ACTIVITIES TO THE AREA WITHIN THE INDICATED CONTRACT LIMITS.

BIDDING SET
MAY 18 1971

REVISIONS	APPROVED	DATE	APPROVED	DATE	APPROVED	DATE
	SIGNED		SIGNED		SIGNED	
	FOR THE BOARD OF LIBRARY TRUSTEES		FOR THE BOARD OF COUNTY COMMISSIONERS		FOR THE DEPT. OF HOUSING & URBAN DEVEL.	

A HISTORIC PRESERVATION PROJECT
BY THE
BOARD OF COUNTY COMMISSIONERS
OF ST. MARYS COUNTY, MD.
ASSISTED BY A GRANT FROM
THE U.S. DEPARTMENT OF
HOUSING & URBAN DEVELOPMENT

THE RESTORATION OF TUDOR HALL
"PHASE No. 2"
LEONARDTOWN, MARYLAND
FOR THE
BOARD OF LIBRARY TRUSTEES
ST. MARYS COUNTY, MARYLAND
ORIN M. BULLOCK, JR., F.A.I.A.
ARCHITECT
1432 JOHN STREET
BALTIMORE, MARYLAND 21217
PHONE: 523-7823

HUD. PROJECT
MD. HPR-3
DATE:
3/1/71
BY: RLW
DRAWING
1
OF 25