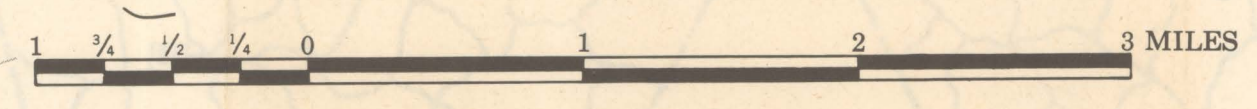


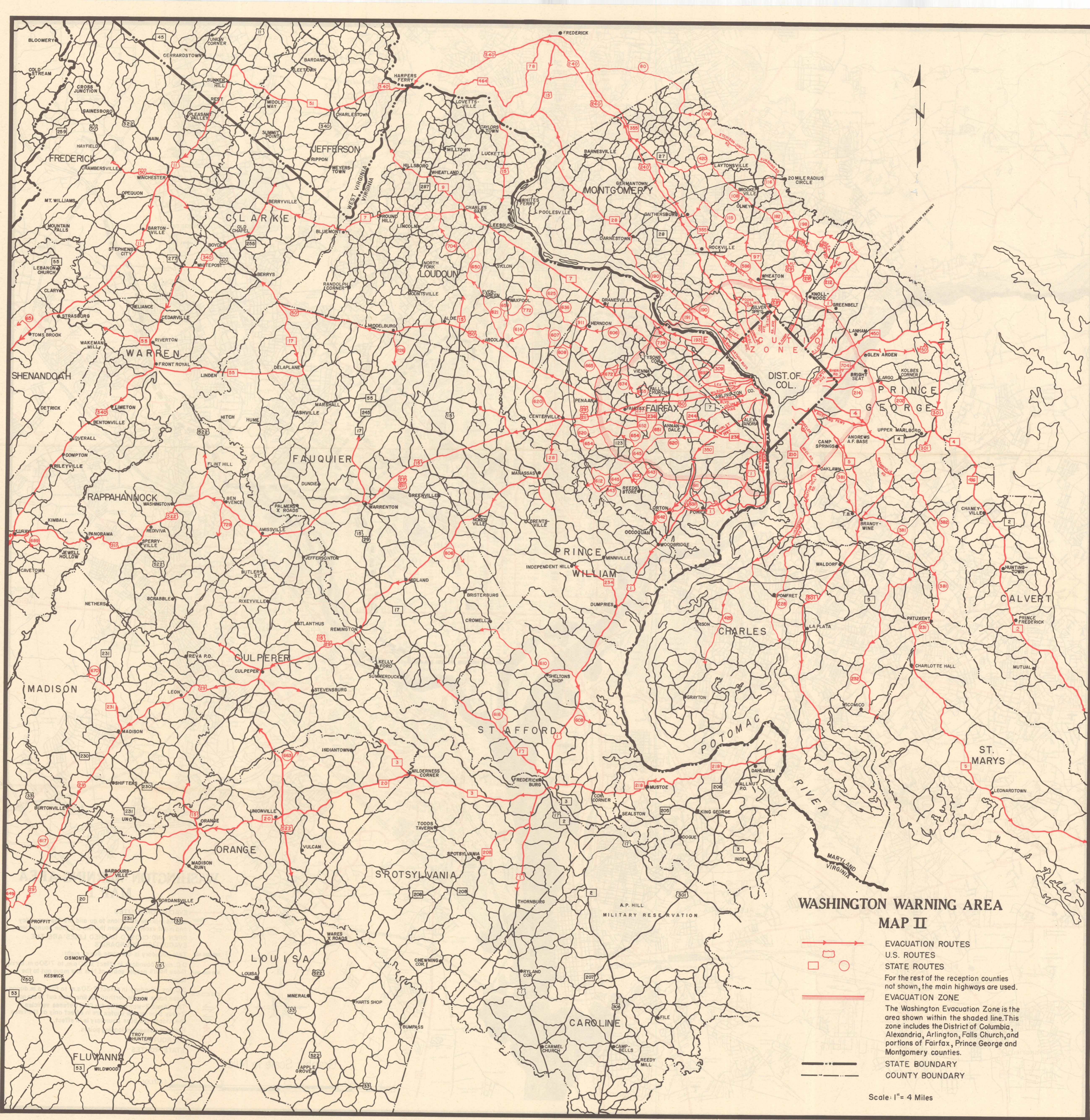


**WASHINGTON WARNING AREA
MAP I**

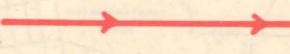
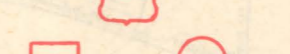



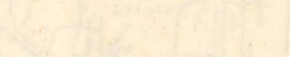
- EVACUATION ROUTES
- Arrows indicate directions to go and are the same day and night except between the two D.C. Blue boundaries.
- OPEN AND CLOSED DASHED LINES ARE THE EVACUATION BOUNDARIES
- This boundary is the same day or night.
- D.C. night boundary in effect 6:30 p.m. to 7:30 a.m. during these hours people south of this line move out to the south.
- D.C. day boundary in effect 7:30 a.m. to 6:30 p.m. during these hours people north of this line move out to the north. This shows 2-way traffic for Civil Defense vehicles. 2-way blue arrow routes are in effect only at the times the associated blue boundary is in effect.
- Railroad passenger loading points.
- U.S. ROUTES
- STATE ROUTES

Graphic Scale in Miles





**WASHINGTON WARNING AREA
MAP II**

-  EVACUATION ROUTES
-  U.S. ROUTES
-  STATE ROUTES
- For the rest of the reception counties not shown, the main highways are used.
-  EVACUATION ZONE
- The Washington Evacuation Zone is the area shown within the shaded line. This zone includes the District of Columbia, Alexandria, Arlington, Falls Church, and portions of Fairfax, Prince George and Montgomery counties.
-  STATE BOUNDARY
-  COUNTY BOUNDARY

Scale: 1" = 4 Miles