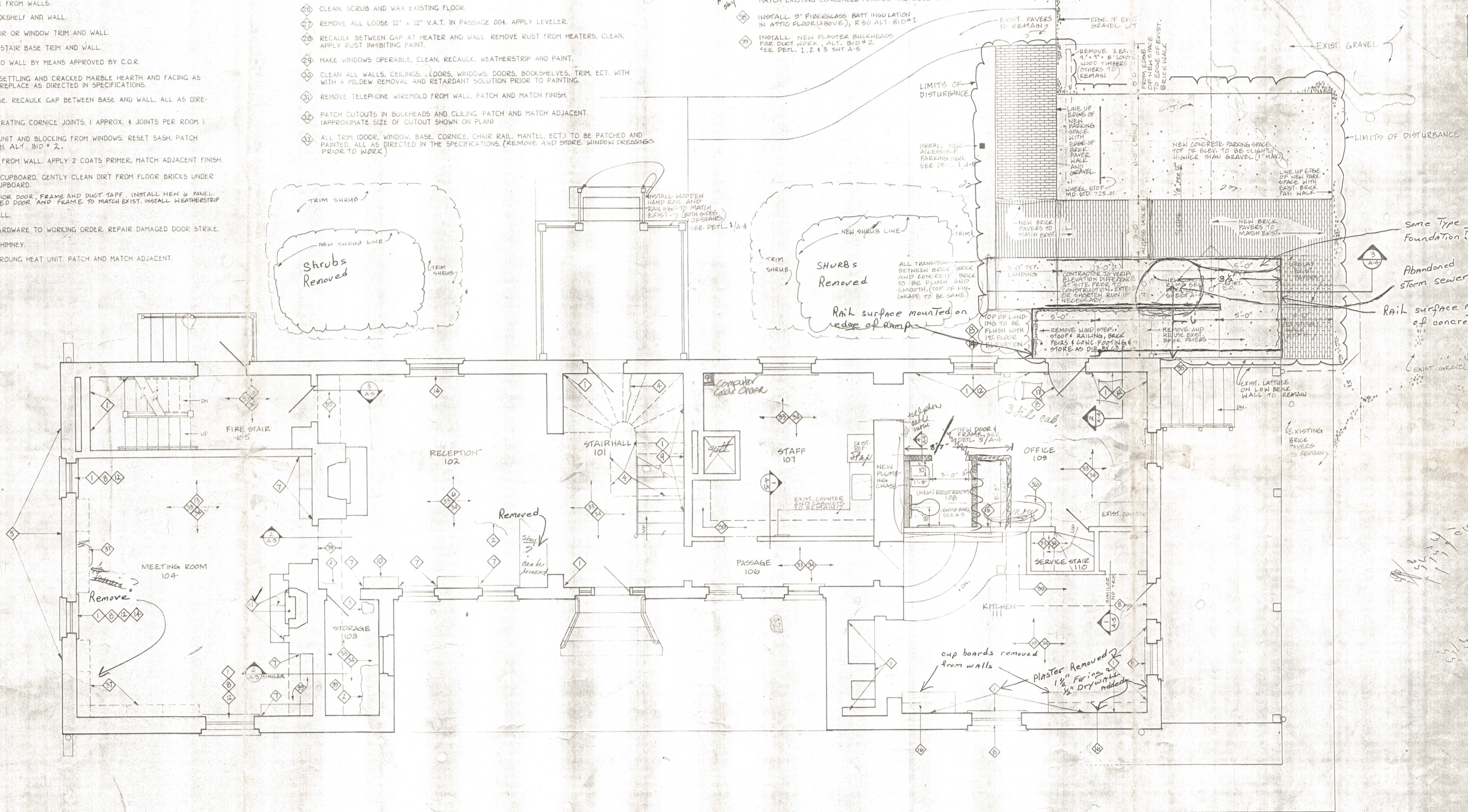


- 1 REPAIR CRACKED AND DEFECTIVE PLASTER ON WALLS AS DIRECTED IN SPECIFICATIONS.
- 2 REPAIR CRACKS IN CEILING PLASTER AS DIRECTED IN SPECIFICATIONS.
- 3 REPAIR FALLEN SECTIONS OF CEILING PLASTER AS DIRECTED IN SPECIFICATIONS.
- 4 REPAIR CRACKED PLASTER ON MAIN STAIR (UNDERSIDE & EDGES OF CURVED STAIRWAY)
- 5 STRUCTURAL ENGINEER TO INSPECT AND EVALUATE BOWING ON OUTSIDE BRICK WALL.
- 6 REMOVE DOUBLE SIDED TAPE FROM WALLS.
- 7 RECAULK GAP BETWEEN BOOKSHELF AND WALL.
- 8 RECAULK GAP BETWEEN DOOR OR WINDOW TRIM AND WALL.
- 9 RECAULK BETWEEN GAP OF STAIR BASE TRIM AND WALL.
- 10 RESECURE BOOK SHELVES TO WALL BY MEANS APPROVED BY C.O.R.
- 11 REPAIR, LEVEL AND RESET SETTLING AND CRACKED MARBLE HEARTH AND FACING AS WELL AS BRICK BASE OF FIREPLACE AS DIRECTED IN SPECIFICATIONS.
- 12 REPAIR DAMAGED WOOD BASE. RECAULK GAP BETWEEN BASE AND WALL. ALL AS DIRECTED IN SPECIFICATIONS.
- 13 CAULK GAPS BETWEEN SEPERATING CORNICE JOINTS. (APPROX. 4 JOINTS PER ROOM)
- 14 REMOVE AIR CONDITIONING UNIT AND BLOCKING FROM WINDOWS. RESET SASH. PATCH AND MATCH ADJACENT FINISH. ALT. BID # 2.
- 15 REMOVE BLACK SUBSTANCE FROM WALL. APPLY 2 COATS PRIMER, MATCH ADJACENT FINISH.
- 16 REMOVE BOTTOM SHELF OF CUPBOARD. GENTLY CLEAN DIRT FROM FLOOR BRICKS UNDER SHELF. CLEAN AND PAINT CUPBOARD.
- 17 REMOVE STORM AND EXTERIOR DOOR FRAME AND DUCT TAPE. INSTALL NEW 6 PANEL COLONIAL METAL INSULATED DOOR AND FRAME TO MATCH EXIST. INSTALL WEATHERSTRIP.
- 18 RESECURE HANDRAIL TO WALL.
- 19 RESTORE EXISTING DOOR HARDWARE TO WORKING ORDER. REPAIR DAMAGED DOOR STRIKE.
- 20 REINSTALL INSULATION IN CHIMNEY.
- 21 REPAIR CORNER MOLDING AROUND HEAT UNIT. PATCH AND MATCH ADJACENT.

- 22 REPLACE CRACKED STORM WINDOW.
- 23 GENTLY REMOVE SPALLING PAINT FROM MASONRY WALL. REPLACE DAMAGED BRICK AND REPOINT JOINTS. ALL AS DIRECTED IN SPECIFICATIONS AND SUBMITTALS APPROVED BY C.O.R. PRIOR TO REMOVING MORTAR OR BRICK.
- 24 REPLACE HALF LOUVERED BIFOLD DOOR WITH A FULLY LOUVERED BIFOLD DOOR.
- 25 REMOVE RUST FROM BEAM (2 CHANNELS WELDED TOGETHER) AND REPAINT WITH RUST INHIBITING PAINT.
- 26 CLEAN, SCRUB AND WAX EXISTING FLOOR.
- 27 REMOVE ALL LOOSE 12" x 12" V.A.T. IN PASSAGE 004. APPLY LEVELER.
- 28 RECAULK BETWEEN GAP AT HEATER AND WALL. REMOVE RUST FROM HEATERS. CLEAN. APPLY RUST INHIBITING PAINT.
- 29 MAKE WINDOWS OPERABLE. CLEAN, RECAULK, WEATHERSTRIP AND PAINT.
- 30 CLEAN ALL WALLS, CEILINGS, FLOORS, WINDOWS, DOORS, BOOKSHELVES, TRIM, ECT. WITH A MILDEW REMOVAL AND RETARDANT SOLUTION PRIOR TO PAINTING.
- 31 REMOVE TELEPHONE WIREMOLD FROM WALL. PATCH AND MATCH FINISH.
- 32 PATCH CUTOUTS IN BULKHEADS AND CEILING. PATCH AND MATCH ADJACENT. (APPROXIMATE SIZE OF CUTOUT SHOWN ON PLAN)
- 33 ALL TRIM (DOOR, WINDOW, BASE, CORNICE, CHAIR RAIL, MANTEL, ECT.) TO BE PATCHED AND PAINTED. ALL AS DIRECTED IN THE SPECIFICATIONS. (REMOVE AND STORE WINDOW PRESSINGS PRIOR TO WORK)

- 34 PATCH, CLEAN, PRIME AND PAINT PREVIOUSLY PAINTED SURFACES INCLUDING WALLS, CEILING, DOORS, CASEWORK, CHASES, BULKHEADS, NEW PARTITIONS, ECT. USE COMPATIBLE MILDREW RESISTANT PRIMER AND FINISH COATS, AS DIRECTED IN SPECIFICATIONS.
- 35 CUT EXISTING COPPER DOWNSPOUT AND EXTEND P.V.C. UP TO RAMP SURFACE. RECONNECT P.V.C. TO DOWNSPOUT. WRAP P.V.C. AS NECESSARY WITH BITUM. PRIOR TO POURING CONCRETE RAMP.
- 36 REMOVE EXISTING BASE CABINET. STORE AS DIRECTED BY C.O.R. INSTALL WOOD BASE TO MATCH EXISTING. PATCH AND MATCH FINISHES.
- 37 REMOVE EXISTING SHELVES AND STANDARDS. STORE AS DIRECTED BY C.O.R. REPAIR, PATCH AND MATCH EXISTING CONCEALED FINISHES AND WOOD BASE.
- 38 INSTALL 9" FIBERGLASS BATT INSULATION IN ATTIC FLOOR (ABOVE), R30 ALT. BID # 2
- 39 INSTALL NEW PLASTER BULKHEADS FOR DUCT WORK. ALT. BID # 2 SEE DET. 1, 2, 4, 5 SHT A-5



FIRST FLOOR PLAN SCALE 1/4" = 1'-0"

13  
 21  
 8  
 4  
 75

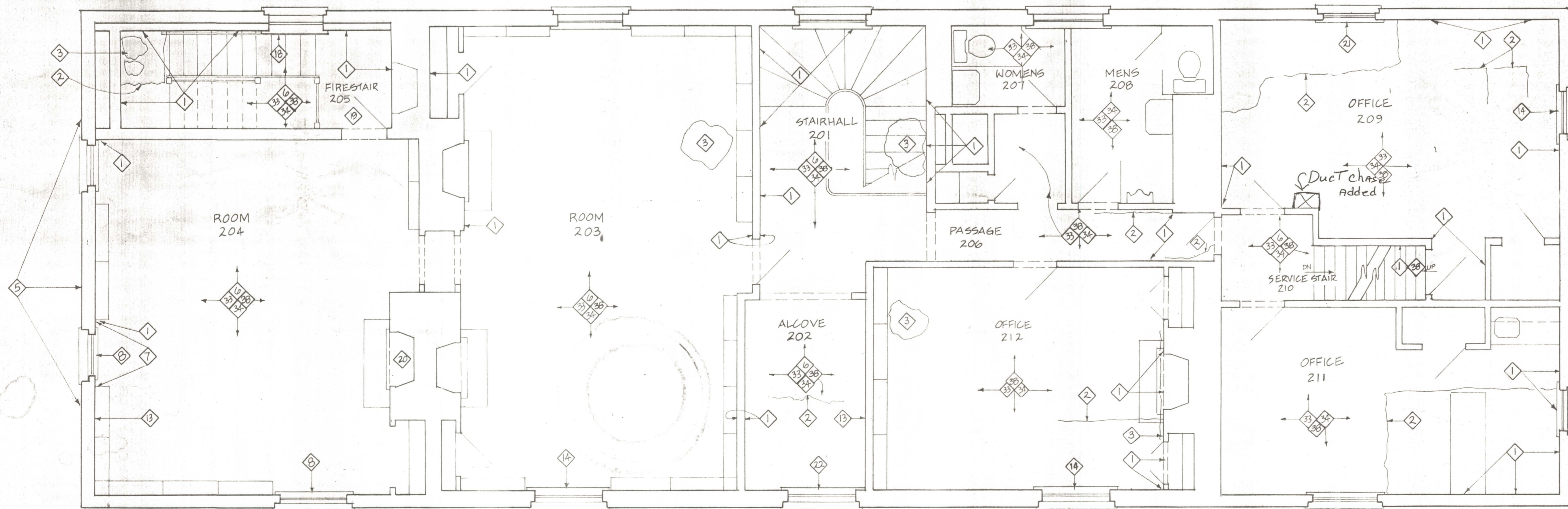
RECEIVED  
 JUL 24 1995  
 ST. MARY'S COUNTY  
 DEPT. OF PUBLIC WORKS

	REVISIONS DATE / INITIAL ITEMS		TUDOR HALL RENOVATION - PHASE 2 ST. MARY'S COUNTY, MARYLAND	
	SCALE 1/4" = 1'-0" DATE E-28-95	APPROVED BY:	1ST FLOOR PLAN	
ST. MARY'S COUNTY DEPARTMENT OF PUBLIC WORKS P.O. BOX 508 CALIFORNIA, MARYLAND 20619			553 MA 04 DRAWING NO.	

DEMOLITION AND REPAIR NOTES (THIS IS INTENDED AS A KEY AND GUIDE AS TO THE GENERAL EXTENT AND LOCATION OF THE WORK.)

- 1 REPAIR CRACKED AND DEFECTIVE PLASTER ON WALLS AS DIRECTED IN SPECIFICATIONS.
- 2 REPAIR CRACKS IN CEILING PLASTER AS DIRECTED IN SPECIFICATIONS.
- 3 REPAIR FALLEN SECTIONS OF CEILING PLASTER AS DIRECTED IN SPECIFICATIONS.
- 4 REPAIR CRACKED PLASTER ON MAIN STAIR
- 5 STRUCTURAL ENGINEER TO INSPECT AND EVALUATE BOWING ON OUTSIDE BRICK WALL.
- 6 REMOVE DOUBLE SIDED TAPE FROM WALLS.
- 7 RECAULK GAP BETWEEN BOOKSHELF AND WALL.
- 8 RECAULK GAP BETWEEN DOOR OR WINDOW TRIM AND WALL.
- 9 RECAULK BETWEEN GAP OF STAIR BASE TRIM AND WALL.
- 10 RESECURE BOOK SHELVES TO WALL BY MEANS APPROVED BY C.O.R.
- 11 REPAIR, LEVEL AND RESET SETTLING AND CRACKED MARBLE HEARTH AND FACING AS WELL AS BRICK BASE OF FIREPLACE AS DIRECTED IN SPECIFICATIONS.
- 12 REPAIR DAMAGED WOOD BASE. RECAULK GAP BETWEEN BASE AND WALL. ALL AS DIRECTED IN SPECIFICATIONS.
- 13 CAULK GAPS BETWEEN SEPERATING CORNICE JOINTS. (APPROX. 4 JOINTS PER ROOM)
- 14 REMOVE AIR CONDITIONING UNIT AND BLOCKING FROM WINDOWS. RESET SASH, PATCH AND MATCH ADJACENT FINISH. ALT. BID #2.
- 15 REMOVE BLACK SUBSTANCE FROM WALL. APPLY 2 COATS PRIMER, MATCH ADJACENT FINISH.
- 16 REMOVE BOTTOM SHELF OF CUPBOARD. GENTLY CLEAN DIRT FROM FLOOR BRICKS UNDER SHELF. CLEAN AND PAINT CUPBOARD.
- 17 REMOVE STORM & EXTERIOR FRAME & DUCT TAPE. INSTALL NEW 6 PANEL COLONIAL METAL INSULATED DOOR & FRAME TO MATCH EXISTING. PROVIDE WEATHERSTRIP.
- 18 RESECURE HANDRAIL TO WALL.
- 19 RESTORE EXISTING DOOR HARDWARE TO WORKING ORDER. REPAIR DAMAGED DOOR STRIKE.
- 20 REINSTALL INSULATION IN CHIMNEY.
- 21 REPAIR CORNER MOLDING AROUND HEAT UNIT. PATCH AND MATCH ADJACENT.
- 22 REPLACE CRACKED STORM WINDOW.
- 23 GENTLY REMOVE SPALLING PAINT FROM MASONRY WALL. REPLACE DAMAGED BRICK AND REPOINT JOINTS. ALL AS DIRECTED IN SPECIFICATIONS AND SUBMITTALS APPROVED BY C.O.R. PRIOR TO REMOVING MORTER OR BRICK.
- 24 REPLACE HALF LOUVERED BIFOLD DOOR WITH A FULLY LOUVERED BIFOLD DOOR.
- 25 REMOVE RUST FROM BEAM (2 CHANNELS WELDED TOGETHER) AND REPAINT WITH RUST INHIBITING PAINT.
- 26 CLEAN, SCRUB AND WAX EXISTING FLOOR.
- 27 REMOVE ALL LOOSE 12" x 12" V.A.T. IN PASSAGE 004. APPLY LEVELER.
- 28 RECAULK BETWEEN GAP AT HEATER AND WALL. REMOVE RUST FROM HEATERS. CLEAN. APPLY RUST INHIBITING PAINT.
- 29 MAKE WINDOWS OPERABLE. CLEAN. RECAULK. WEATHERSTRIP AND PAINT.
- 30 CLEAN ALL WALLS, CEILINGS, FLOORS, WINDOWS, DOORS, BOOKSHELVES, TRIM, ECT. WITH A MILDEW REMOVAL AND RETARDANT SOLUTION PRIOR TO PAINTING.
- 31 REMOVE TELEPHONE WIREMOLD FROM WALL. PATCH AND MATCH FINISH.
- 32 PATCH CUTOUTS IN BULKHEADS AND CEILING. PATCH AND MATCH ADJACENT. (APPROXIMATE SIZE OF CUTOUT SHOWN ON PLAN)
- 33 ALL TRIM (DOOR, WINDOW, BASE, CORNICE, CHAIR RAIL, MANTEL, ECT.) TO BE PATCHED AND PAINTED. ALL AS DIRECTED IN THE SPECIFICATIONS.

- 34 PATCH, CLEAN, PRIME AND PAINT PREVIOUSLY PAINTED SURFACES, INCLUDING WALLS, DOORS, CEILING, CASEWORK, CHASIS, BULKHEADS, NEW PARTITIONS, ECT. USE COMPATIBLE MILDEW RESISTANT PRIMER AND FINISH COATS, AS DIRECTED IN SPECIFICATIONS.
- 35 CUT EXISTING COPPER DOWNSPOUT AND EXTEND P.V.C. UP TO RAMP SURFACE. RECONNECT P.V.C. TO DOWNSPOUT. COAT P.V.C. AS NECESSARY WITH BITUM. PRIOR TO POURING CONCRETE RAMP.
- 36 REMOVE EXISTING BASE CABINET. STORE AS DIRECTED BY C.O.R. INSTALL WOOD BASE TO MATCH EXISTING. PATCH AND MATCH FINISHES.
- 37 REMOVE EXISTING SHELVES AND STANDARDS. STORE AS DIRECTED BY C.O.R. REPAIR, PATCH AND MATCH EXISTING CONCEALED FINISHES AND WOOD BASE.
- 38 INSTALL 9" FIBERGLASS BATT INSULATION IN ATTIC FLOOR (ABOVE) R30 - ALT. BID #1



SECOND FLOOR PLAN SCALE 1/4" = 1'-0"

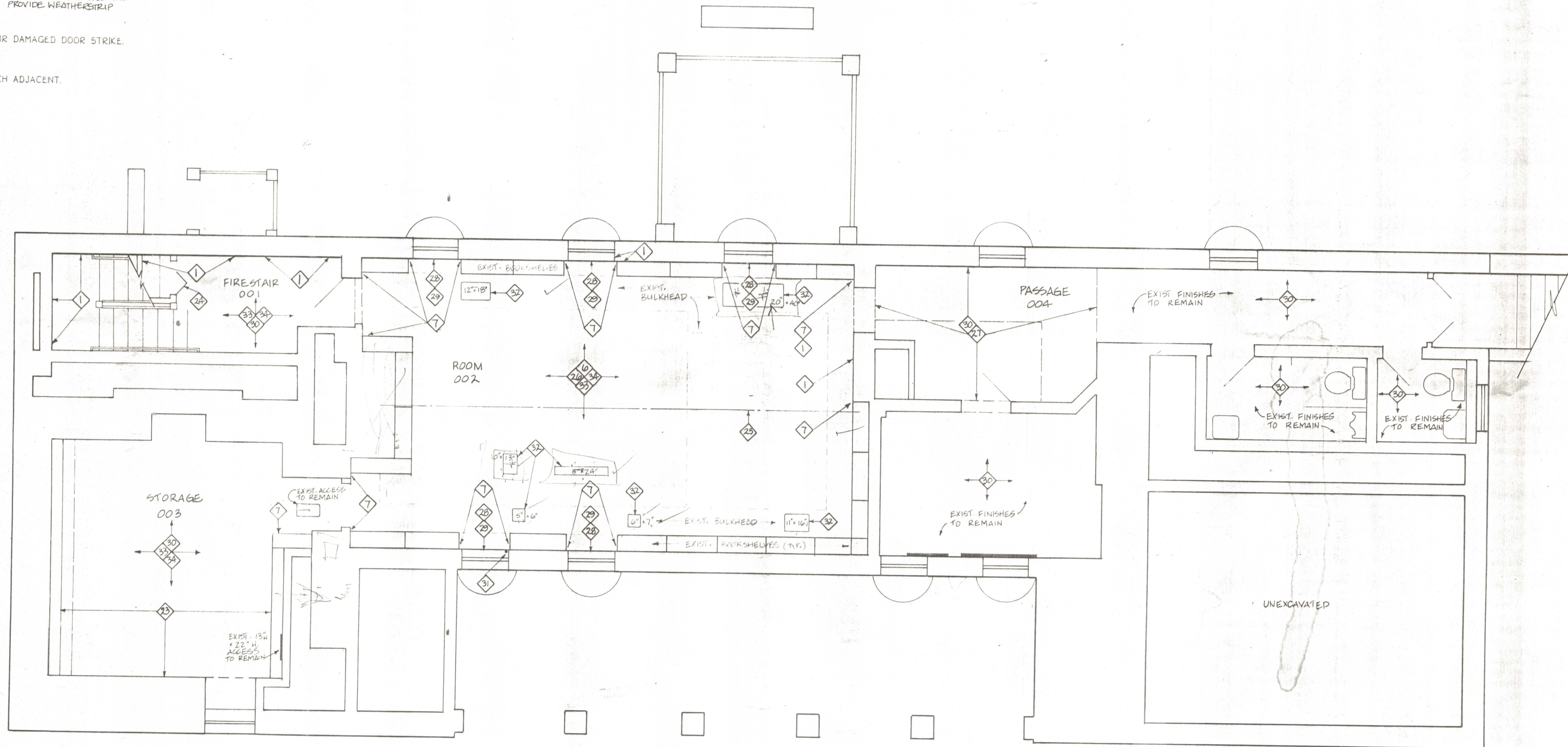
RECEIVED  
JUL 24 1995  
ST. MARY'S COUNTY  
DEPT. OF PUBLIC WORKS

	REVISIONS		TUDOR HALL RENOVATION - PHASE 2 ST. MARY'S COUNTY, MARYLAND	
	DATE/INITIAL	ITEMS	SCALE 1/4" = 1'-0"	APPROVED BY:
			DATE 5-28-93	
			2nd FLOOR PLAN	
			ST. MARY'S COUNTY DEPARTMENT OF PUBLIC WORKS P.O. BOX 508 CALIFORNIA, MARYLAND 20619	
			DRAWN BY: SAB SHEET: A-2 DRAWING NO: 593 MA 946	

- 1 REPAIR CRACKED AND DEFECTIVE PLASTER ON WALLS AS DIRECTED IN SPECIFICATIONS.
- 2 REPAIR CRACKS IN CEILING PLASTER AS DIRECTED IN SPECIFICATIONS.
- 3 REPAIR FALLEN SECTIONS OF CEILING PLASTER AS DIRECTED IN SPECIFICATIONS.
- 4 REPAIR CRACKED PLASTER ON MAIN STAIR
- 5 STRUCTURAL ENGINEER TO INSPECT AND EVALUATE BOWING ON OUTSIDE BRICK WALL.
- 6 REMOVE DOUBLE SIDED TAPE FROM WALLS.
- 7 RECAULK GAP BETWEEN BOOKSHELF AND WALL.
- 8 RECAULK GAP BETWEEN DOOR OR WINDOW TRIM AND WALL.
- 9 RECAULK BETWEEN GAP OF STAIR BASE TRIM AND WALL.
- 10 RESECURE BOOK SHELVES TO WALL BY MEANS APPROVED BY C.O.R.
- 11 REPAIR, LEVEL AND RESET SETTLING AND CRACKED MARBLE HEARTH AND FACING AS WELL AS BRICK BASE OF FIREPLACE AS DIRECTED IN SPECIFICATIONS.
- 12 REPAIR DAMAGED WOOD BASE. RECAULK GAP BETWEEN BASE AND WALL. ALL AS DIRECTED IN SPECIFICATIONS.
- 13 CAULK GAPS BETWEEN SEPERATING CORNICE JOINTS. ( APPROX. 4 JOINTS PER ROOM )
- 14 REMOVE AIR CONDITIONING UNIT AND BLOCKING FROM WINDOWS. RESET SASH. PATCH AND MATCH ADJACENT FINISH. ALT. BID # 2.
- 15 REMOVE BLACK SUBSTANCE FROM WALL. APPLY 2 COATS PRIMER. MATCH ADJACENT FINISH.
- 16 REMOVE BOTTOM SHELF OF CUPBOARD. GENTLY CLEAN DIRT FROM FLOOR BRICKS UNDER SHELF. CLEAN AND PAINT CUPBOARD.
- 17 REMOVE STORM & EXTERIOR DOOR, FRAME & DUCT TAPE. INSTALL NEW 6 PANEL COLONIAL METAL INSULATED DOOR, FRAME TO MATCH EXISTING. PROVIDE WEATHERSTRIP
- 18 RESECURE HANDRAIL TO WALL.
- 19 RESTORE EXISTING DOOR HARDWARE TO WORKING ORDER. REPAIR DAMAGED DOOR STRIKE.
- 20 REINSTALL INSULATION IN CHIMNEY.
- 21 REPAIR CORNER MOLDING AROUND HEAT UNIT. PATCH AND MATCH ADJACENT.

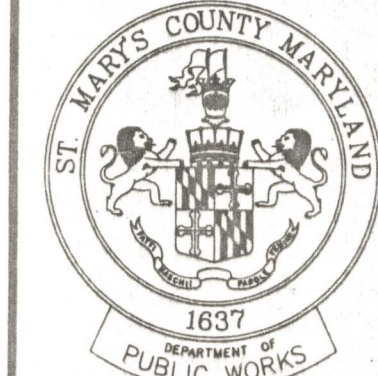
- 22 REPLACE CRACKED STORM WINDOW.
- 23 GENTLY REMOVE SPALLING PAINT FROM MASONRY WALL. REPLACE DAMAGED BRICK AND REPOINT JOINTS, ALL AS DIRECTED IN SPECIFICATIONS AND SUBMITTALS APPROVED BY C.O.R. PRIOR TO REMOVING MORTAR OR BRICK.
- 24 REPLACE HALF LOUVERED BIFOLD DOOR WITH A FULLY LOUVERED BIFOLD DOOR.
- 25 REMOVE RUST FROM BEAM (2 CHANNELS WELDED TOGETHER) AND REPAINT WITH RUST INHIBITING PRIMER & PAINT.
- 26 CLEAN, SCRUB AND WAX EXISTING FLOOR.
- 27 REMOVE ALL LOOSE 12" x 12" V.A.T. IN PASSAGE 004. APPLY LEVELER. INSTALL NEW V.C.T.
- 28 RECAULK BETWEEN GAP AT HEATER AND WALL. REMOVE RUST FROM HEATERS. CLEAN. APPLY RUST INHIBITING PRIMER & PAINT.
- 29 MAKE WINDOWS OPERABLE. CLEAN. RECAULK, WEATHERSTRIP AND PAINT.
- 30 CLEAN ALL WALLS, CEILINGS, FLOORS, WINDOWS, DOORS, BOOKSHELVES, TRIM, ECT. WITH WITH A MILDEW REMOVAL AND RETARDANT SOLUTION PRIOR TO PAINTING.
- 31 REMOVE TELEPHONE WIREMOLD FROM WALL. PATCH AND MATCH FINISH.
- 32 PATCH CUTOUTS IN BULKHEADS AND CEILING. PATCH AND MATCH ADJACENT. (APPROXIMATE SIZE OF CUTOUT SHOWN ON PLAN)
- 33 ALL TRIM (DOOR, WINDOW, BASE, CORNICE, CHAIR RAIL, MANTEL, ECT.) TO BE PATCHED AND PAINTED, ALL AS DIRECTED IN THE SPECIFICATIONS.

- 34 PATCH, CLEAN, PRIME AND PAINT PREVIOUSLY PAINTED SURFACES INCLUDING WALLS, DOORS, CEILING, CASEWORK, CHASES, BULKHEADS, NEW PARTITIONS, ECT. USE COMPATIBLE MILDEW RESISTANT PRIMER AND FINISH COATS, AS DIRECTED IN SPECIFICATIONS.
- 35 CUT EXISTING COPPER DOWNSPOUT AND EXTEND P.V.C. UP TO RAMP SURFACE. RECONNECT P.V.C. TO DOWNSPOUT. COAT P.V.C. AS NECESSARY WITH BITUM. PRIOR TO POURING CONCRETE RAMP.
- 36 REMOVE EXISTING BASE CABINET. STORE AS DIRECTED BY C.O.R. INSTALL WOOD BASE TO MATCH EXISTING. PATCH AND MATCH FINISHES.
- 37 REMOVE EXISTING SHELVES AND STANDARDS. STORE AS DIRECTED BY C.O.R. REPAIR, PATCH AND MATCH EXISTING CONCEALED FINISHES AND WOOD BASE.
- 38 INSTALL 9" FIBERGLASS BATT INSULATION IN ATTIC FLOOR (ABOVE) R 30.



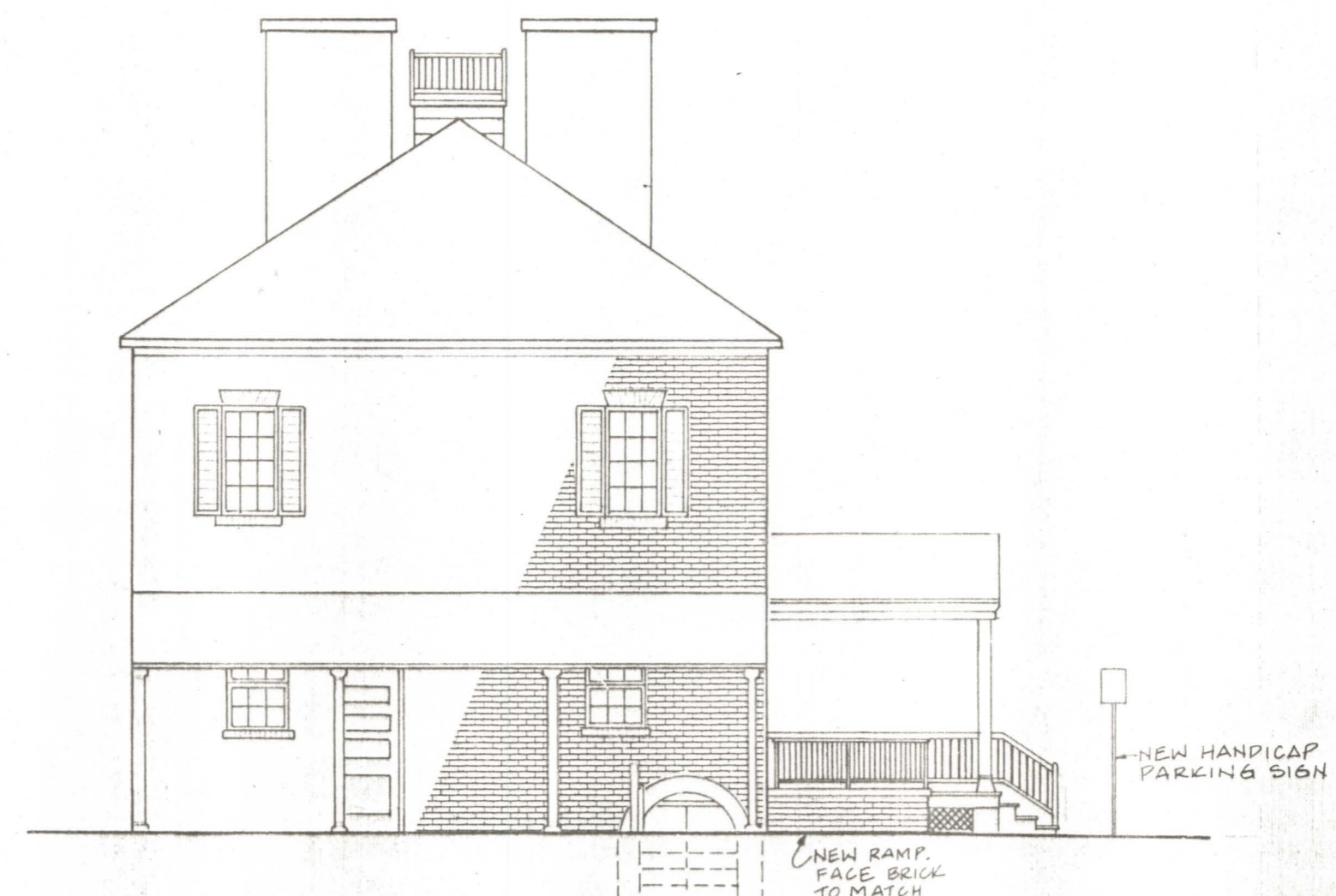
BASEMENT PLAN SCALE 1/4" = 1'-0"

RECEIVED  
JUL 24 1995  
ST. MARY'S COUNTY  
DEPT. OF PUBLIC WORKS

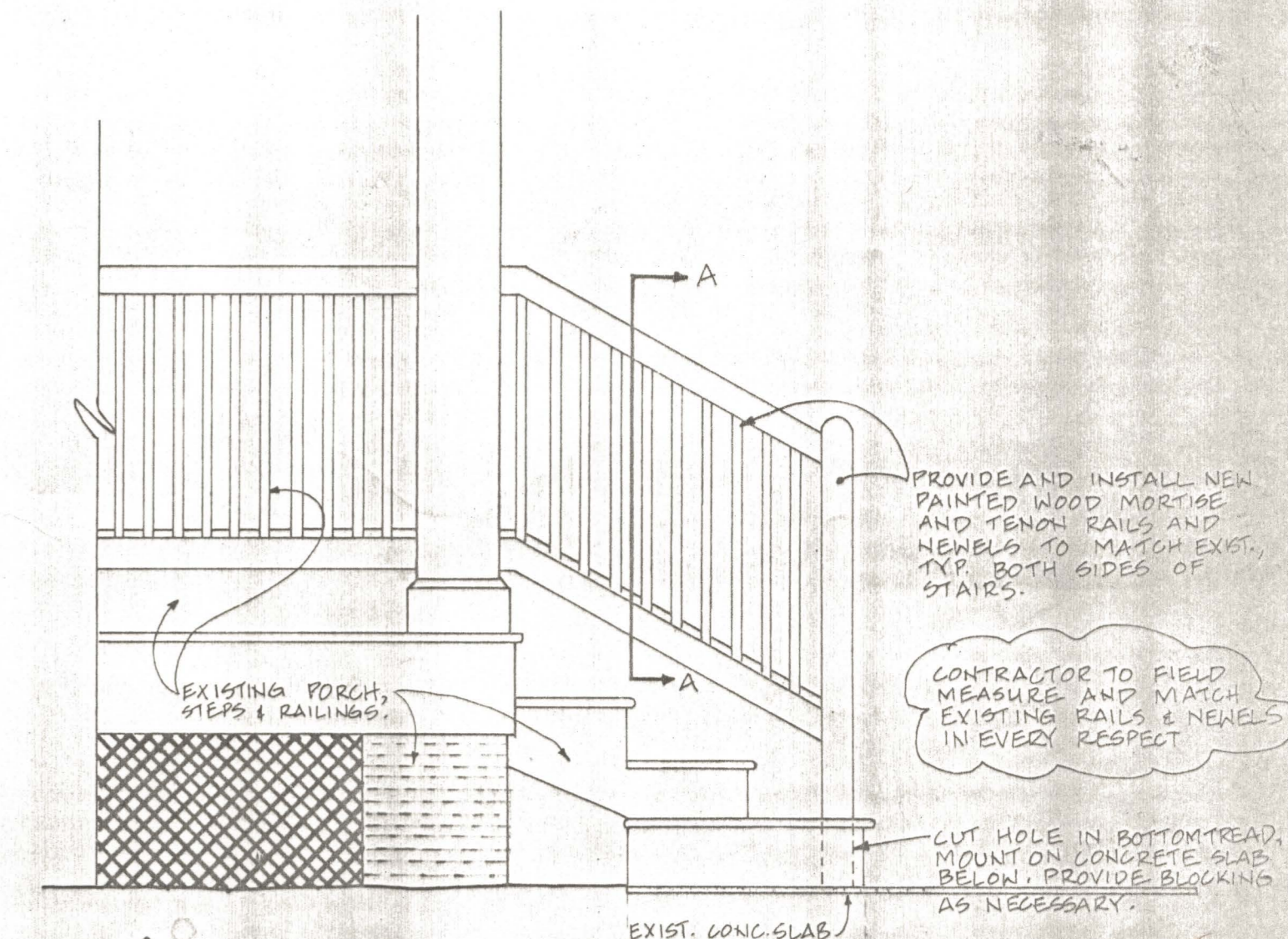
 1637 DEPARTMENT OF PUBLIC WORKS	REVISIONS		TUDOR HALL RENOVATION - PHASE 2 ST. MARY'S COUNTY, MARYLAND	
	DATE/INITIAL	ITEMS	SCALE	APPROVED BY:
			1/4" = 1'-0"	
		DATE	5-28-95	DRAWN BY: S.A.B.
				SHEET: A-3
				BASEMENT PLAN
				ST. MARY'S COUNTY DEPARTMENT OF PUBLIC WORKS P.O. BOX 508 CALIFORNIA, MARYLAND 20619
				593 MA 945 DRAWING NO.



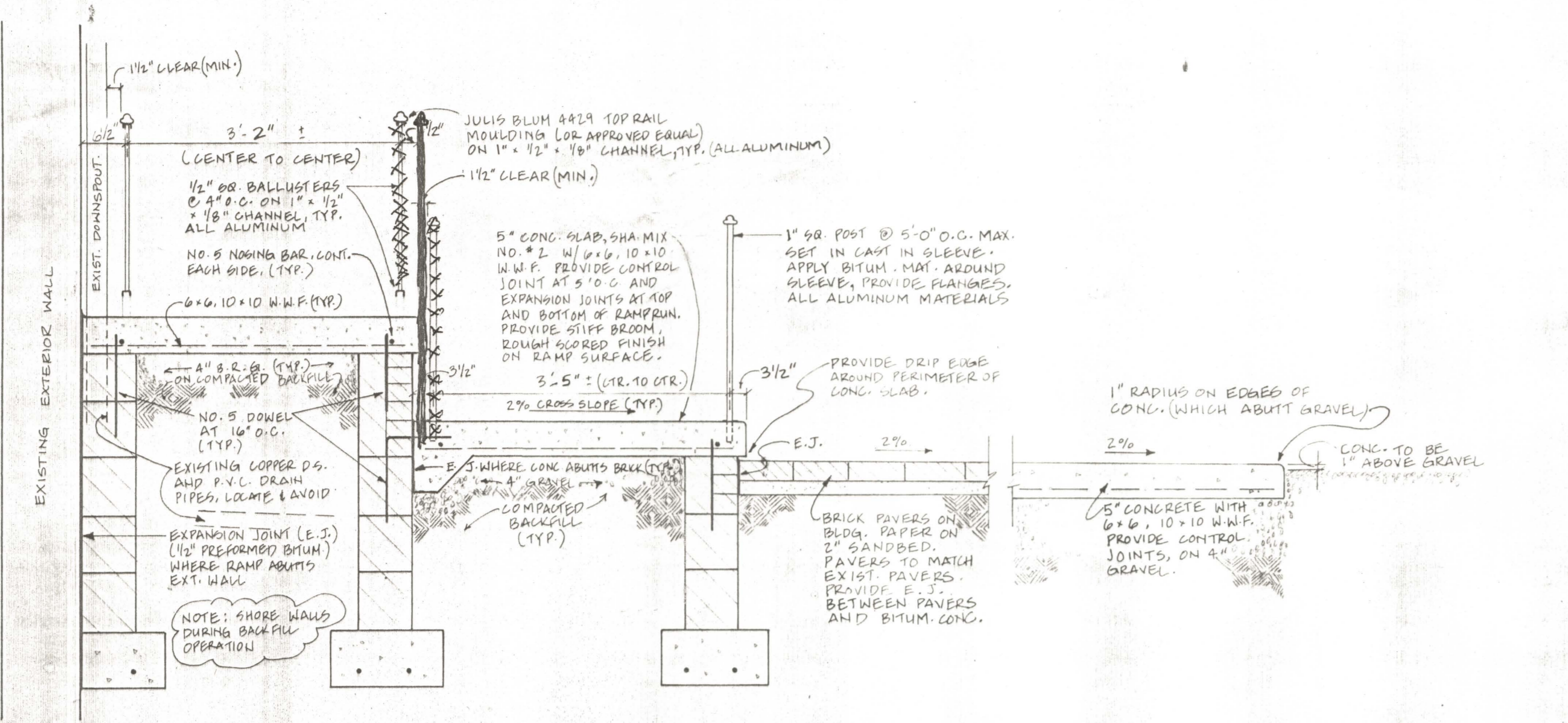
NORTH ELEVATION SCALE 1/8" = 1'-0"



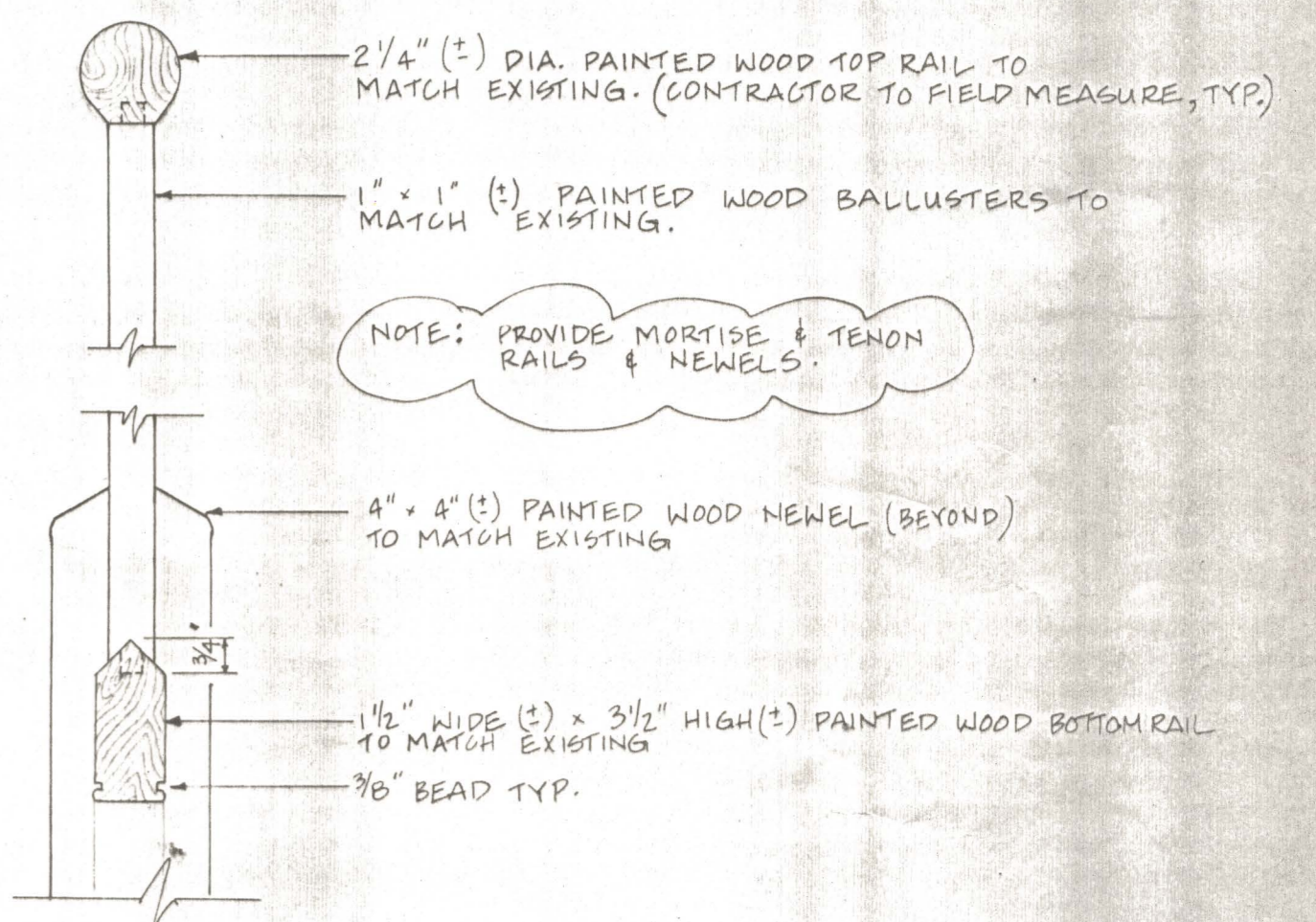
EAST ELEVATION SCALE 1/8" = 1'-0"



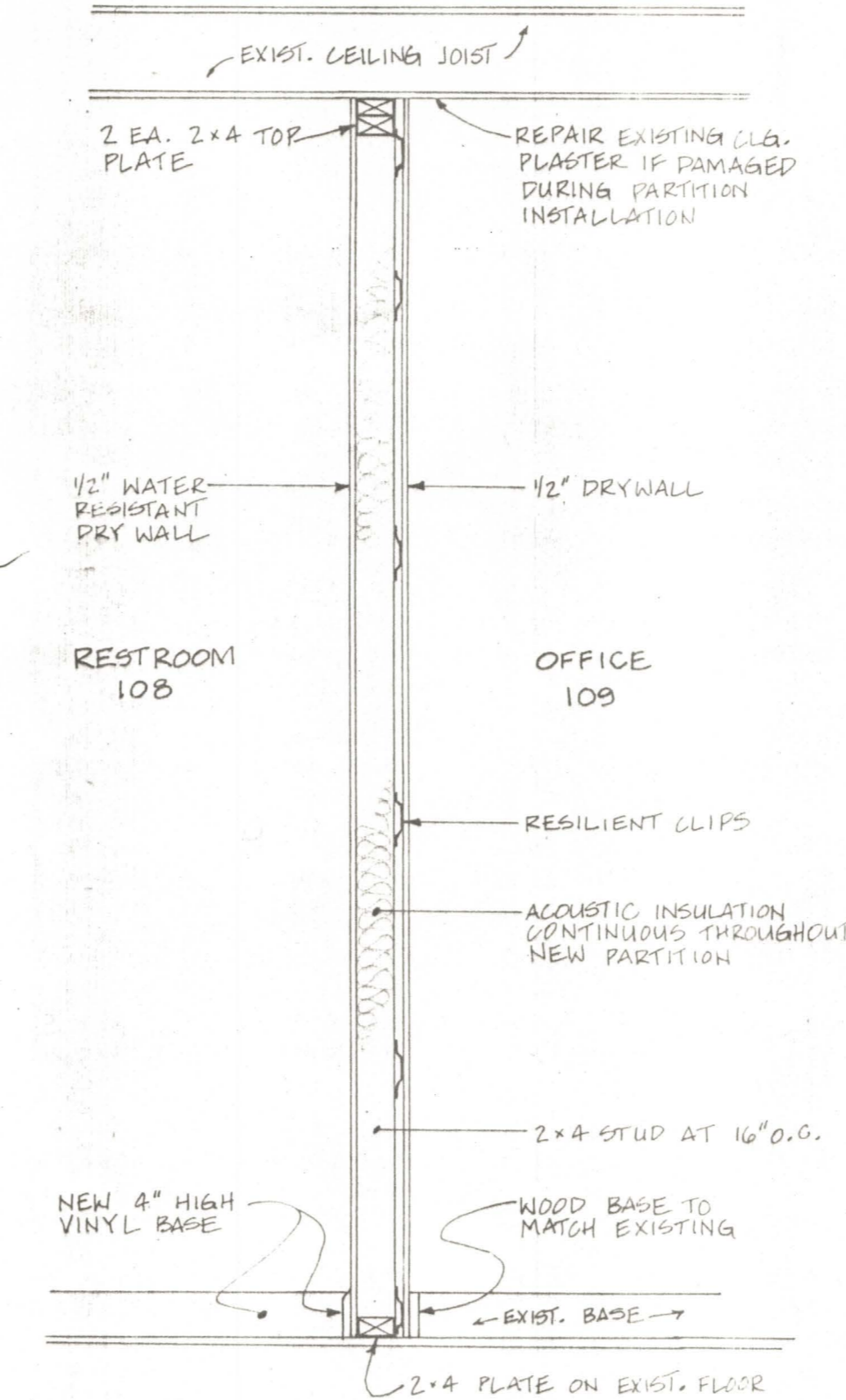
HANDRAIL DETAIL SCALE: 3/4" = 1'-0"



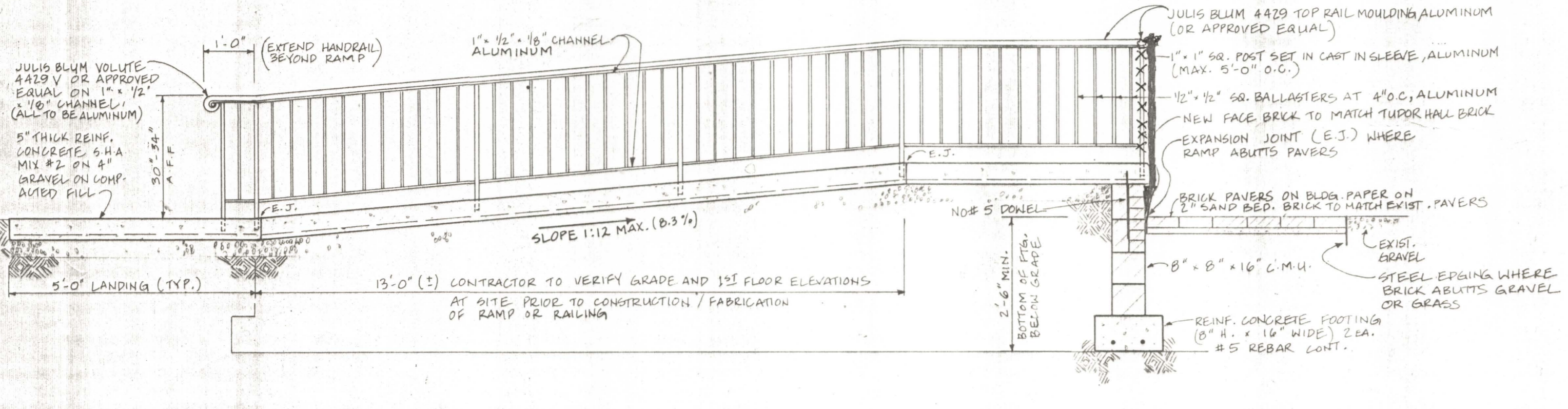
RAMP DETAIL SCALE 3/4" = 1'-0"



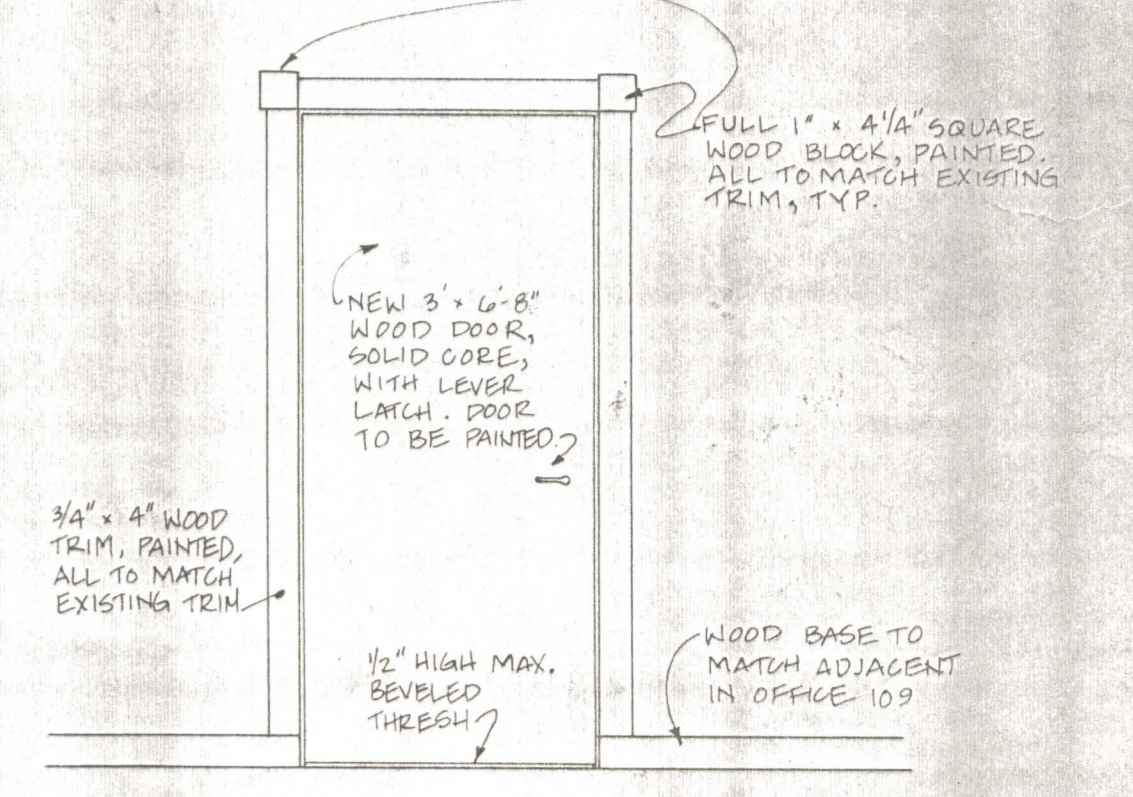
RAILING DETAIL A-A SCALE 3" = 1'-0"



NEW PARTITION SCALE 3/4" = 1'-0"

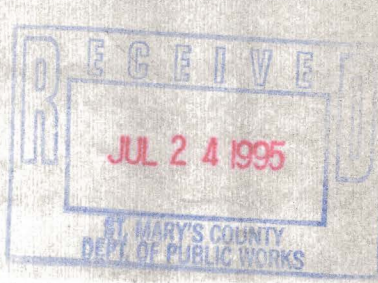


RAMP DETAIL SCALE 1/2" = 1'-0"



ELEVATION - NEW DOOR SCALE 1/2" = 1'-0"

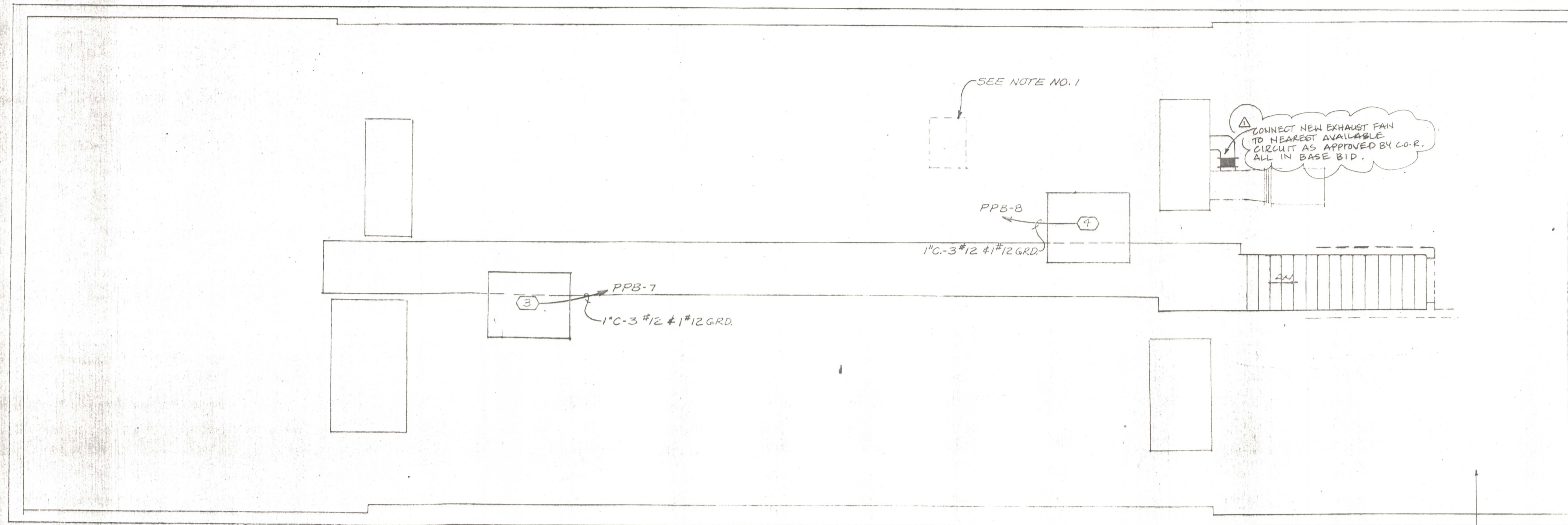
	<b>REVISIONS</b> DATE/INITIAL    ITEMS		<b>TUDOR HALL RENOVATION - PHASE 2</b> <b>ST. MARY'S COUNTY, MARYLAND</b>	
	SCALE	AS NOTED	APPROVED BY:	DRAWN BY: SAG
	DATE	5-28-93		SHEET: A-4
ELEVATIONS, DETAILS				ST. MARY'S COUNTY DEPARTMENT OF PUBLIC WORKS P.O. BOX 508 CALIFORNIA, MARYLAND 20619
				593 MA 944 DRAWING NO.







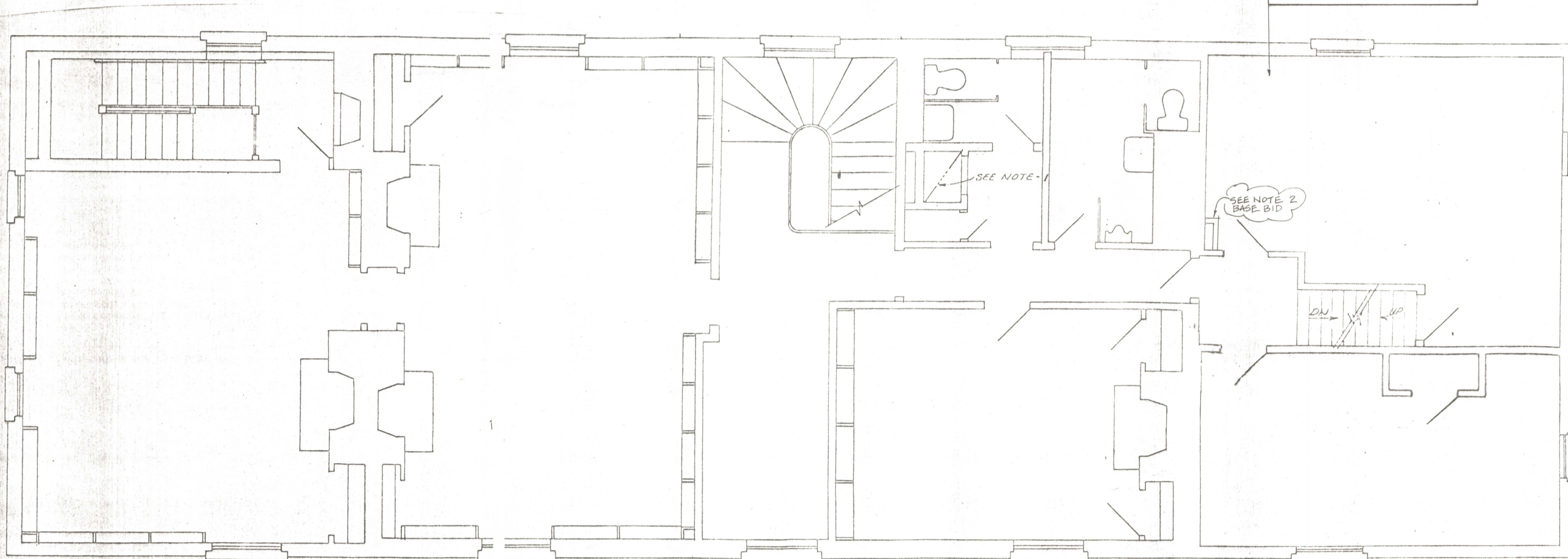




**ROOF SPACE PLAN**

SCALE: 1/4" = 1'-0"

ALTERNATE BID # 2  
ALL ELECTRICAL WORK ON E-1 AND E-2 SHALL BE BID UNDER ALTERNATE NO. 2, UNLESS OTHERWISE NOTED.



**SECOND FLOOR PLAN**

SCALE: 1/4" = 1'-0"

NOTE:  
EXCEPT FOR REFERENCE NOTE-1 & 2, THERE IS NO OTHER ELECTRICAL WORK ON THE SECOND FLOOR.

**LEGEND**

- EXISTING FLUORESCENT LIGHTING FIXTURE
- RELOCATED FLUORESCENT LIGHTING FIXTURE
- TRACK LIGHT, TRIANGLES INDICATE TRACK FIXTURES
- SAFETY DISCONNECT SWITCH
- JUNCTION BOX
- SPECIAL EQUIPMENT CONNECTION, REFER TO SCHEDULE ON DRAWING E-1
- CONDUIT AND WIRE, CONCEALED IN WALLS OR ABOVE CEILINGS.
- 4' WALL MOUNTED FLUORESCENT LIGHT FIXTURE
- DUPLEX RECEPTACLE WITH GROUND FAULT CIRCUIT INTERRUPTER

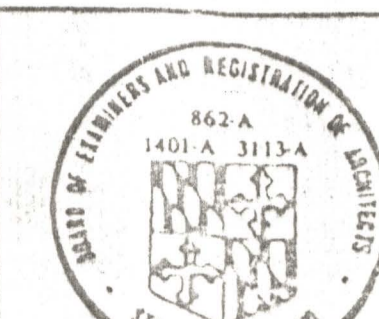
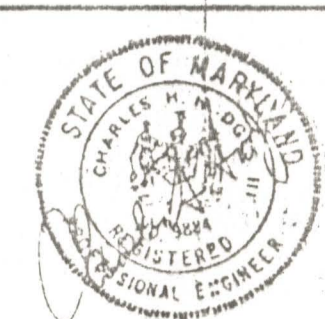
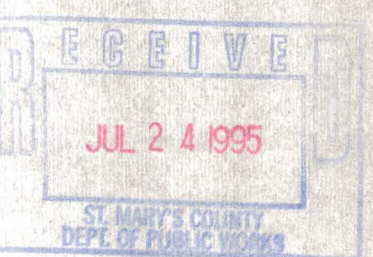
**REFERENCE NOTES**

1. CONTRACTOR SHALL UTILIZE EXISTING VERTICAL CHASE FOR CONDUIT RUNS FOR NEW ROOFTOP UNITS DOWN TO POWER PANEL "PPB". CONDUIT SHALL BE GALVANIZED RIGID STEEL AND CONDUCTORS SHALL BE RATED FOR INSTALLATION IN A RETURN AIR PLENUM.
2. CONTRACTOR SHALL UTILIZE NEW CHASE FOR CONDUIT RUNS TO NEW EXHAUST FAN IN ATTIC.

**GENERAL NOTES**

1. THE MECHANICAL & ELECTRICAL DESIGN WAS PERFORMED BY CENTURY M & E INC. CONSULTANTS TO SMEALLIE, ORRICK & JANKA FOR THE ORIGINAL PROJECT DESIGN. EXEMPTS HAVE BEEN SAVED FROM THAT DESIGN WITH MINOR REVISIONS AND MODIFICATIONS.

Exit Light Casem ?



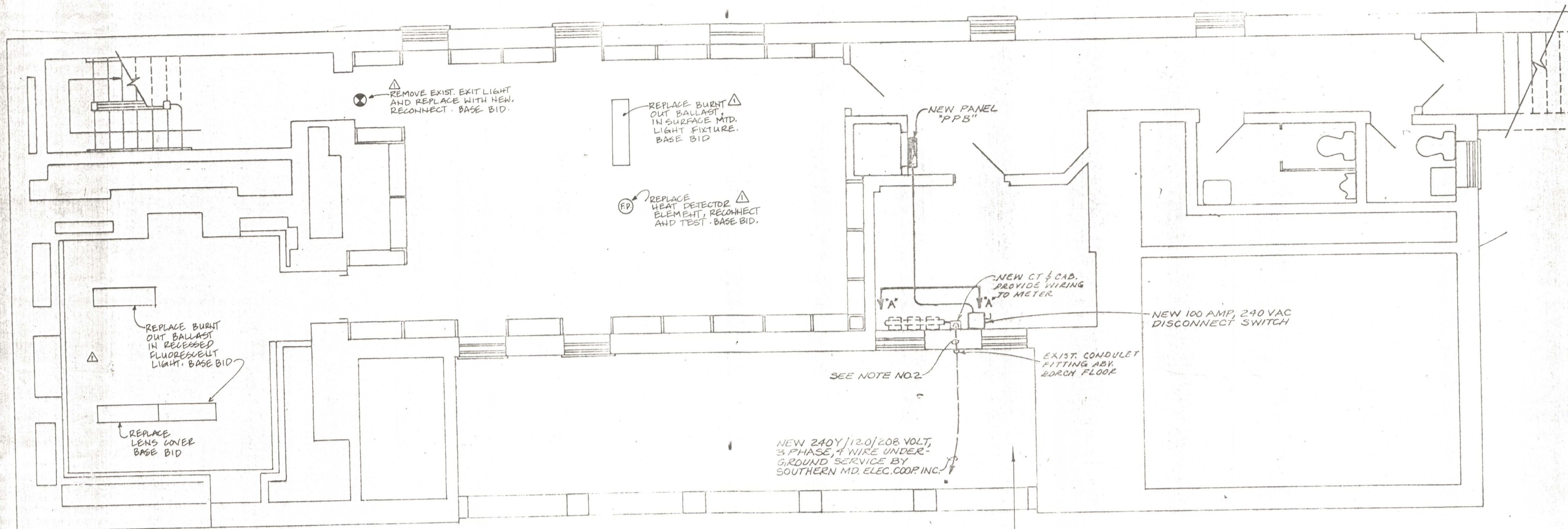
**ELECTRICAL SECOND FLOOR & ROOF SPACE PLANS**

SMEALLIE, ORRICK AND JANKA, LTD.  
ARCHITECTS PLANNERS  
5820 YORK ROAD BALTIMORE, MD. 21212

DATE	6-1-89
JOB NO.	87240
DRAWING NO.	
OF	

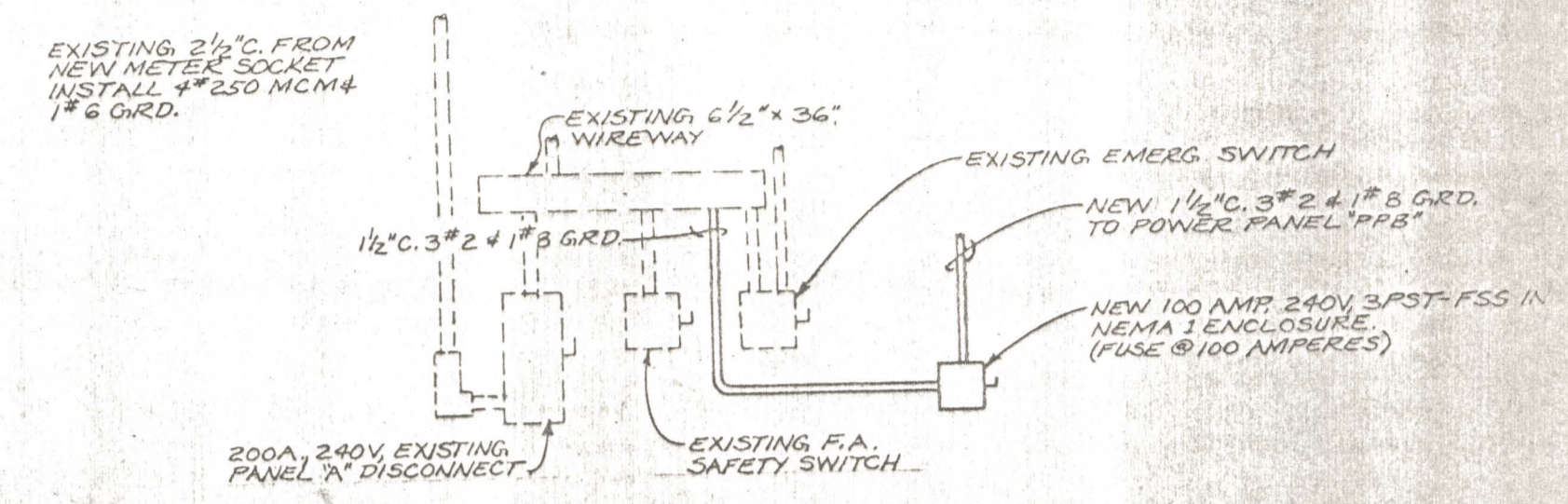
DATE/INITIAL	REVISIONS
5-28-93 SAB	ADDITIONAL ELECTRICAL WORK IN BASE BID. SEE NOTE 2. ALL EXIST. WIRE TO BE REMOVED WITH ALL CONDUIT. NEW IN ATT. BID # 2

TUDOR HALL RENOVATION - PHASE 2 ST. MARY'S COUNTY MARYLAND	
APPROVED BY:	DRAWN BY: SAB
SCALE: 1/4" = 1'-0"	SHEET: E-1
DATE: 5-28-93	
SECOND FLOOR & ROOF SPACE ELECTRICAL PLAN	
ST. MARY'S COUNTY DEPARTMENT OF PUBLIC WORKS P.O. BOX 508 CALIFORNIA, MARYLAND 20619	
	593 MA940 DRAWING NO.



**BASEMENT PLAN**  
SCALE: 1/4" = 1'-0"

ALTERNATE BID No. 2  
ALL ELECTRICAL WORK SHOWN ON E-1 AND E-2 UNLESS NOTED OTHERWISE SHALL BE BID UNDER ALTERNATE NUMBER 2.

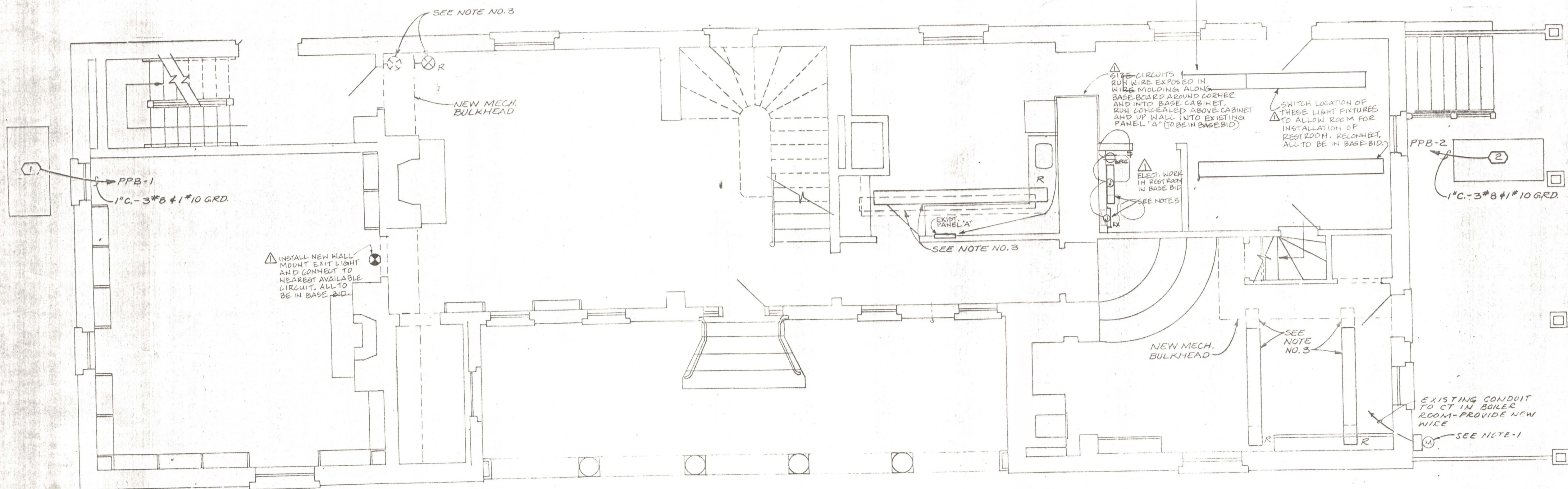


**ELEVATION "A-A"**  
NOT TO SCALE

PANEL PPB		240 VOLT - 3 PHASE - 3 WIRE	
I <sub>sc</sub> = 10,000 A.I.C. SYM.		100-AMPERE MAIN LUGS ONLY SURFACE MOUNTED ENCLOSURE	
CKT. NO.	SERVING	BREAKERS POLE AMP	BREAKERS POLE AMP
1	CONDENSING UNIT CU-1	3 40	2 CONDENSING UNIT CU-2 3 60
3			4
5			6
7	AIR CONDITIONING UNIT ACU-1	3 20	8 AIR CONDITIONING UNIT ACU-2 3 20
9			10
11			12
13	SPACE		14 SPACE
15	SPACE		16 SPACE
17	SPACE		18 SPACE

ITEM	DESCRIPTION	CHARACTERISTICS	REMARKS
1	CONDENSING UNIT CU-1	230V 3P 30.5 FLA	FURNISH & INSTALL 240V 3P 40A 3PST FSS IN NEMA 3R ENCLOSURE AND MAKE ALL FINAL CONNECTIONS TO UNIT
2	CONDENSING UNIT CU-2	230V 3P 30.5 FLA	FURNISH & INSTALL 240V 3PST FSS IN NEMA 3R ENCLOSURE AND MAKE ALL FINAL CONNECTIONS TO UNIT
3	AIR CONDITIONING UNIT ACU-1	230V 3P 3.2 FLA	FURNISH & INSTALL 240V 3PST FSS IN NEMA 3R ENCLOSURE ON ROOF UNIT & MAKE ALL FINAL CONNECTIONS TO UNIT
4	AIR CONDITIONING UNIT ACU-2	230V 3P 3.2 FLA	FURNISH & INSTALL 240V 3PST FSS IN NEMA 3R ENCLOSURE ON ROOF UNIT & MAKE ALL FINAL CONNECTIONS TO UNIT

- NOTES:**
- EXISTING METERING EQUIPMENT TO BE REMOVED. NEW ELECTRIC METER AND SOCKET (FURNISHED BY POWER COMPANY) SHALL BE INSTALLED BY ELECTRICAL CONTRACTOR.
  - EXISTING 2 1/2" CONDUIT TO REMAIN AND BE UTILIZED FOR NEW SERVICE ENTRANCE CONDUCTORS. EXISTING 3 # 3/0 TO BE DISCONNECTED AND REMOVED. INSTALL NEW 4 # 250 MCM #1 #6 GRD.
  - EXISTING LIGHTING FIXTURES SHALL BE DISCONNECTED AND RELOCATED AS INDICATED TO AVOID INTERFERENCE WITH NEW MECHANICAL BULKHEAD
  - BASE BID - REPAIR LIGHT FIXTURES AS NOTED IN BASEMENT. ADD EXIT LIGHT TO FIRST FLOOR MEETING ROOM. REPLACE ALL FIRE ALARMS WITH COMBO STROBE LIGHT / HORN TYPE. TEST FIRE ALARM THROUGHOUT FOR PROPER OPERATION.
  - INSTALL 6" LONG WALL MOUNTED BRACKET FIXTURE CENTERED ON THE BACK WALL AT 80" AFF. FIXTURE TO HAVE ELECTRIC BALLAST AND 2 EA. T-8 LAMPS. INSTALL WALL MOUNTED EXHAUST FAN GRILLE AND CONNECT FAN TO LIGHT SWITCH. ALL TO BE INCLUDED IN BASE BID.
  - SEE GENERAL NOTE NO. 1, SHEET E-1



**FIRST FLOOR PLAN**  
SCALE: 1/4" = 1'-0"



		<b>ELECTRICAL BASEMENT &amp; FIRST FLOOR PLANS</b>		DATE <b>G-1-89</b>	REVISIONS	TUDOR HALL RENOVATION - PHASE 2 ST. MARY'S COUNTY MARYLAND
		<b>SMEALLIE, ORRICK AND JANKA, LTD.</b> ARCHITECTS AND PLANNERS 5820 YUNK ROAD BALTIMORE, MD. 21212		JOB NO. <b>87240</b>	DATE/INITIAL/ITEMS 5/28/95 DAB ADDITIONAL ELECTRICAL WORK IN BASE BID AS NOTED. ALL ELECTRICAL WORK TO BE INSTALLED IN BASE BID # 2.	
<b>CENTURY M&amp;E, INC.</b> SUITE 300, 7110 QUANDARULE VILLAGE OF CROSS KEYS BALTIMORE, MARYLAND 21208 (301) 425-2200		DRAWING NO. <b>CF</b>		<b>BASEMENT AND FIRST FLOOR ELECTRICAL PLAN</b>		ST. MARY'S COUNTY DEPARTMENT OF PUBLIC WORKS P.O. BOX 508 CALIFORNIA, MARYLAND 20619