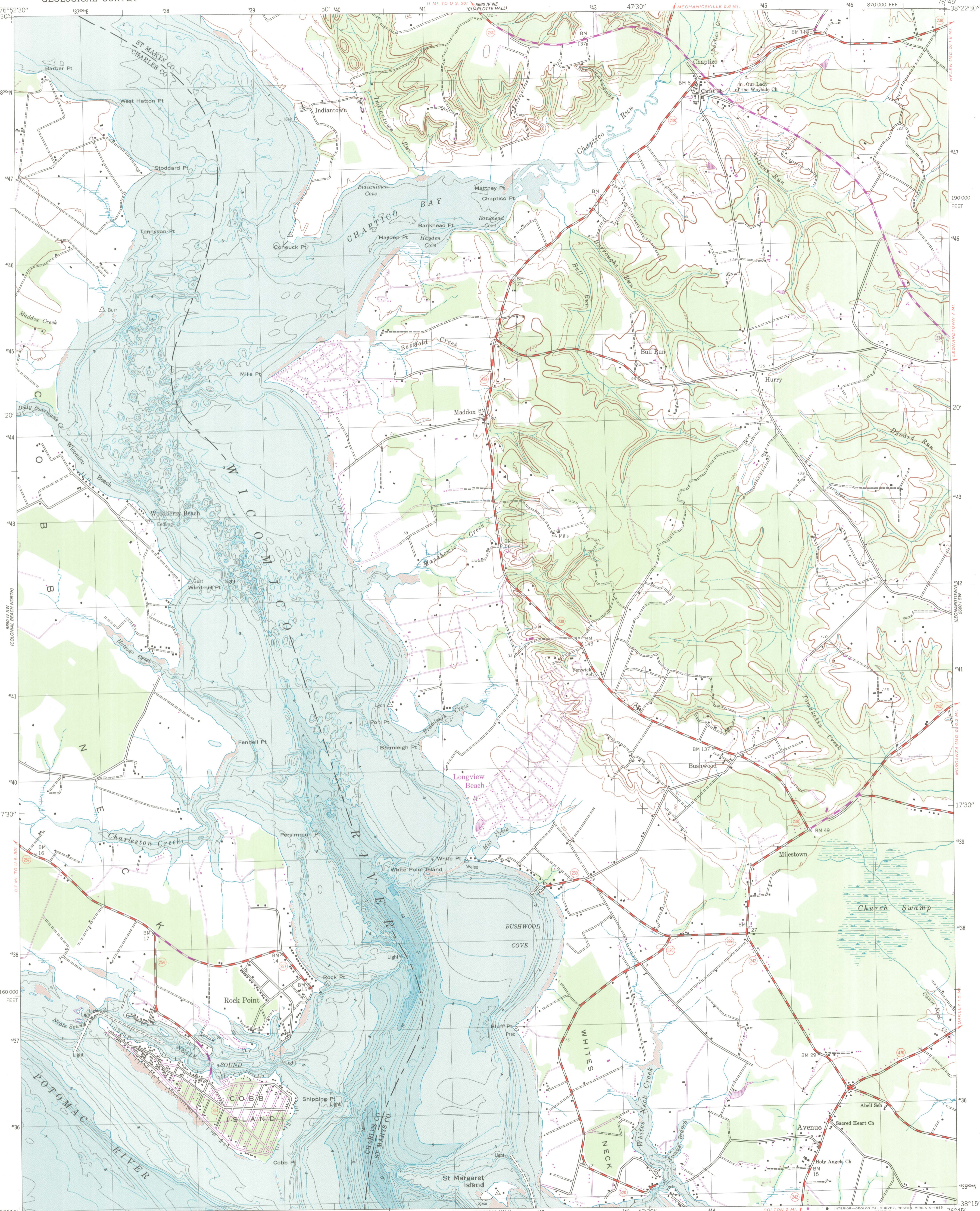
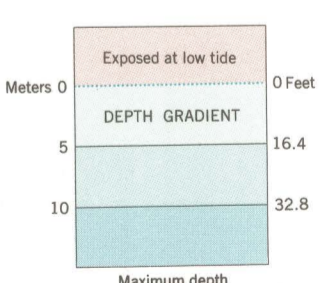


5660 IV SE
(MECHANICSVILLE)



Feet	Meters
1	0.3048
2	0.6096
3	0.9144
4	1.2192
5	1.5240
6	1.8288
7	2.1336
8	2.4384
9	2.7432
10	3.0480

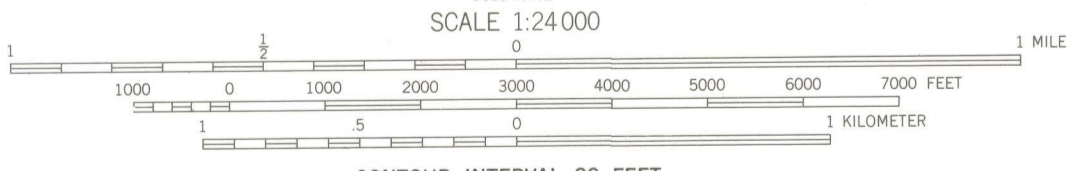
To convert feet to meters multiply by 0.3048
To convert meters to feet multiply by 3.2808



Mapped by the Defense Mapping Agency Edited and published by the Geological Survey and the National Ocean Survey
Control by USGS and NOS/NOAA
Topography from aerial photographs by photogrammetric methods and by planetable surveys 1943. Aerial photographs taken 1942
Bathymetry compiled by the National Ocean Survey from tide-coordinated hydrographic surveys. This information is not intended for navigational purposes
Mean low water (dotted) line and mean high water (heavy solid) line compiled by NOS from tide-coordinated aerial photographs. Apparent shoreline (outer edge of vegetation) shown by light solid line
Polyconic projection. 10,000-foot grid ticks based on Maryland coordinate system
1000-meter Universal Transverse Mercator grid, zone 18 1927 North American Datum
To place on the predicted North American Datum 1983 move the projection lines 9 meters south and 27 meters west as shown by dashed corner ticks
Revisions shown in purple compiled by the Geological Survey from aerial photographs taken 1974 and other sources. This information is not field checked. Map edited 1974.

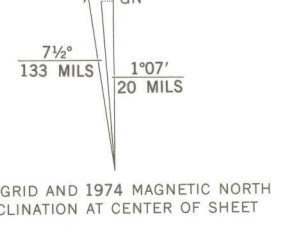
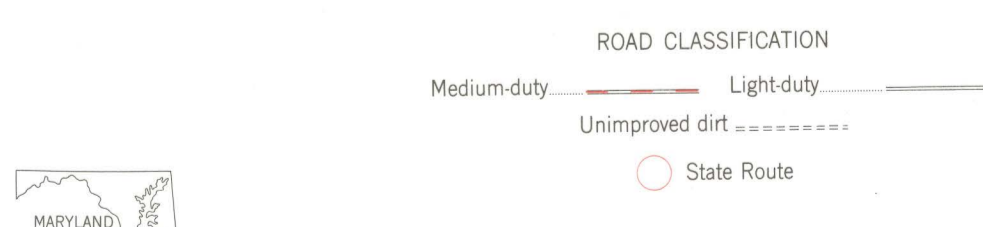
NATIONAL OCEAN SURVEY HYDROGRAPHIC SURVEY INDEX

Survey Number	Survey Date	Survey Scale	Survey Line Spacing (Naut. Miles)
H-8613	1961	1:10,000	01-05
H-8702	1961-62	1:10,000	01-05



CONTOUR INTERVAL 20 FEET
NATIONAL GEODETIC VERTICAL DATUM OF 1929
BATHYMETRIC CONTOUR INTERVAL 1 METER WITH SUPPLEMENTARY 0.5 METER CONTOURS—DATUM IS MEAN LOW WATER
THE RELATIONSHIP BETWEEN THE TWO DATUMS IS VARIABLE
THE MEAN RANGE OF TIDE IS APPROXIMATELY 0.6 METER

BASE MAP COMPLIES WITH NATIONAL MAP ACCURACY STANDARDS
BATHYMETRIC SURVEY DATA COMPLIES WITH INTERNATIONAL HYDROGRAPHIC ORGANIZATION (IHO) SPECIAL PUBLICATION 44 ACCURACY STANDARDS AND/OR STANDARDS USED AT THE TIME OF THE SURVEY
FOR SALE BY U. S. GEOLOGICAL SURVEY, RESTON, VIRGINIA 22092
AND NATIONAL OCEAN SURVEY, ROCKVILLE, MARYLAND 20852
A FOLDER DESCRIBING TOPOGRAPHIC MAPS AND SYMBOLS IS AVAILABLE ON REQUEST



ROCK POINT, MD.
38076-C7-TB-024
1943
PHOTOREVISED 1974
BATHYMETRY ADDED 1982
DMA 5660 IV SE—SERIES Y833

DEPOSITORY