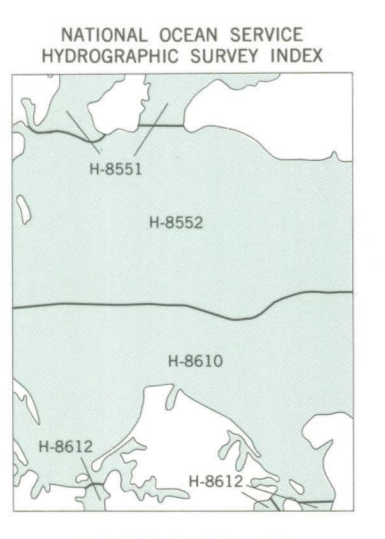
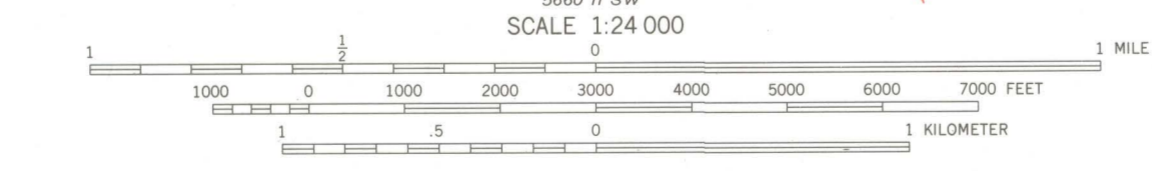


Produced by the United States Geological Survey
Control by USGS and NOS/NOAA
Topography by photogrammetric methods from aerial photographs taken 1967. Field checked 1968.
Bathymetry compiled from the National Ocean Service from tide-coordinated hydrographic surveys. This information is not intended for navigational purposes.
Mean low water (dotted) line and mean high water (heavy solid) line compiled by NOS from tide-coordinated aerial photographs. Apparent shoreline (outer edge of vegetation) shown by light-solid line.
Projection: Maryland coordinate system, (Lambert conformal conic) 10,000-foot grid ticks; Maryland coordinate system, and Virginia coordinate system, north zone 18, 1000-meter Universal Transverse Mercator grid ticks, zone 18, shown in blue. 1927 North American Datum (NAD 27) North American Datum of 1983 (NAD 83) is shown by dashed corner ticks. The values of the shift between NAD 27 and NAD 83 for 7.5-minute intersections are given in USGS Bulletin 1875.
There may be private inholdings within the boundaries of the National or State reservations shown on this map.
Revisions shown in purple compiled from aerial photographs taken 1988 and other sources. This information not field checked. Map edited 1993.
Information shown in purple may not meet USGS content standards and may conflict with previously mapped contours.



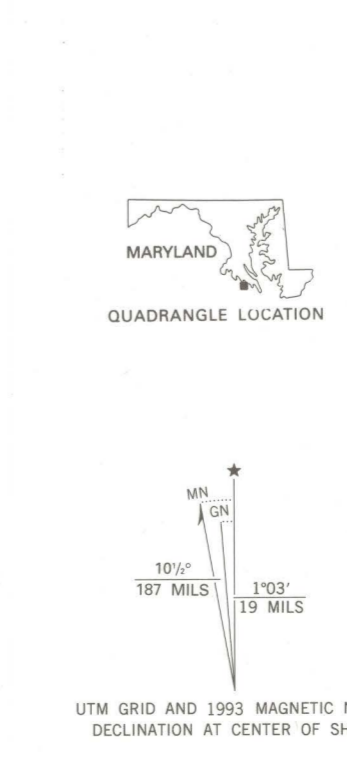
HYDROGRAPHIC SURVEY INFORMATION

Survey Number	Survey Date	Survey Scale	Survey Line Spacing (Naut. Miles)
H-8551	1960	1:10,000	.03-.06
H-8552	1960	1:10,000	.02-.07
H-8610	1960-61	1:10,000	.02-.07
H-8612	1961	1:10,000	.02-.05



SCALE 1:24 000
CONTOUR INTERVAL 10 FEET
DASHED LINES REPRESENT 5-FOOT CONTOURS
NATIONAL GEODETIC VERTICAL DATUM OF 1929
BATHYMETRIC CONTOUR INTERVAL 1 METER WITH SUPPLEMENTARY 0.5 METER CONTOURS-DATUM IS MEAN LOWER LOW WATER
THE RELATIONSHIP BETWEEN THE TWO DATUMS IS VARIABLE

BASE MAP COMPLIES WITH U.S. GEOLOGICAL SURVEY STANDARDS FOR SPATIAL ACCURACY - CLASS 2
BATHYMETRIC SURVEY DATA COMPLIES WITH INTERNATIONAL HYDROGRAPHIC ORGANIZATION (IHO) SPECIAL PUBLICATION 44 ACCURACY STANDARDS AND/OR STANDARDS USED AT THE DATE OF THE SURVEY
FOR SALE BY U.S. GEOLOGICAL SURVEY, P.O. BOX 25286, DENVER, COLORADO 80225,
NATIONAL OCEAN SERVICE, ROCKVILLE, MARYLAND 20852,
AND VIRGINIA DIVISION OF MINERAL RESOURCES, CHARLOTTEVILLE, VIRGINIA 22903
A FOLDER DESCRIBING TOPOGRAPHIC MAPS AND SYMBOLS IS AVAILABLE ON REQUEST



ROAD CLASSIFICATION
Primary highway, hard surface
Secondary highway, hard surface
Light-duty road, hard or improved surface
Unimproved road
Interstate Route
U.S. Route
State Route

ST. CLEMENTS ISLAND, MD.-VA.
1968
REVISED 1993
BATHYMETRY ADDED 1982
DMA 5660 II NW-SERIES V833