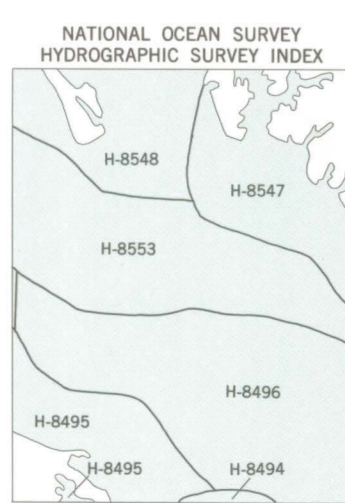
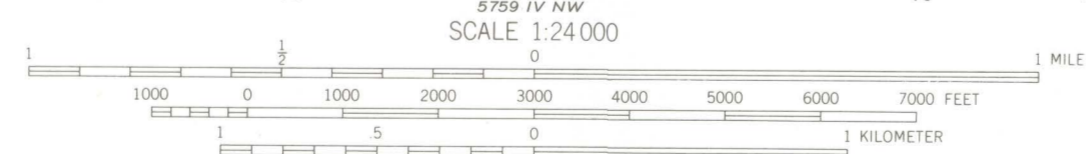


Mapped, edited, and published by the Geological Survey and the National Ocean Survey in cooperation with Commonwealth of Virginia agencies  
Control by USGS and NOS/NOAA  
Topography by photogrammetric methods from aerial photographs taken 1967. Field checked 1968  
Bathymetry compiled by the National Ocean Survey from tide-coordinated hydrographic surveys. Soundings compiled from NOS chart 12233. This information is not intended for navigational purposes  
Mean low water (dotted) line and mean high water (heavy solid) line compiled by NOS from tide-coordinated aerial photographs. Apparent shoreline (outer edge of vegetation) shown by light solid line  
Polyconic projection. 10,000-foot grid ticks based on Maryland coordinate system and Virginia coordinate system, south zone  
1000-meter Universal Transverse Mercator grid, zone 18  
1927 North American Datum  
To place on the predicted North American Datum 1983 move the projection lines 9 meters south and 28 meters west as shown by dashed corner ticks  
Map photoinspected 1973  
No major culture or drainage changes observed

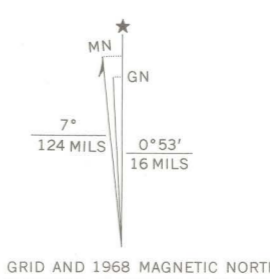


HYDROGRAPHIC SURVEY INFORMATION

Survey Number	Survey Date	Survey Scale	Survey Line Spacing (Naut. Miles)
H-8494	1959	1:10,000	02-05
H-8495	1959	1:10,000	01-06
H-8496	1959	1:20,000	03-10
H-8547	1959-60	1:10,000	03-10
H-8548	1960	1:10,000	02-07
H-8553	1960	1:20,000	03-20



CONTOUR INTERVAL 10 FEET  
SUPPLEMENTARY CONTOUR INTERVAL 5 FEET  
NATIONAL GEODETIC VERTICAL DATUM OF 1929  
BATHYMETRIC CONTOUR INTERVAL 1 METER WITH SUPPLEMENTARY 0.5 METER CONTOURS-SOUNDINGS IN METERS  
DATUM IS MEAN LOW WATER  
THE RELATIONSHIP BETWEEN THE TWO DATUMS IS VARIABLE  
THE MEAN RANGE OF TIDE IS APPROXIMATELY 0.5 METER



ROAD CLASSIFICATION  
Secondary highway, all weather, Light-duty road, all weather, hard surface, improved surface  
Unimproved road, fair or dry weather  
State Route

ST. GEORGE ISLAND, MD.-VA.  
38076-A4-TB-024

1968  
BATHYMETRY ADDED 1982  
PHOTOINSPECTED 1973  
DMA 5760 III SW-SERIES V833

BASE MAP COMPLIES WITH NATIONAL MAP ACCURACY STANDARDS  
BATHYMETRIC SURVEY DATA COMPLIES WITH INTERNATIONAL HYDROGRAPHIC ORGANIZATION (IHO) SPECIAL PUBLICATION 44 ACCURACY STANDARDS  
AND/OR STANDARDS USED AT THE DATE OF THE SURVEY  
FOR SALE BY U. S. GEOLOGICAL SURVEY, RESTON, VIRGINIA, 22092  
NATIONAL OCEAN SURVEY, ROCKVILLE, MARYLAND 20852  
AND VIRGINIA DIVISION OF MINERAL RESOURCES, CHARLOTTESVILLE, VIRGINIA 22903  
A FOLDER DESCRIBING TOPOGRAPHIC MAPS AND SYMBOLS IS AVAILABLE ON REQUEST